

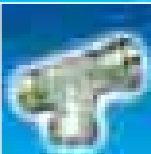


RACCORDI **OLEODINAMICI**



HYDRAULIC FITTINGS

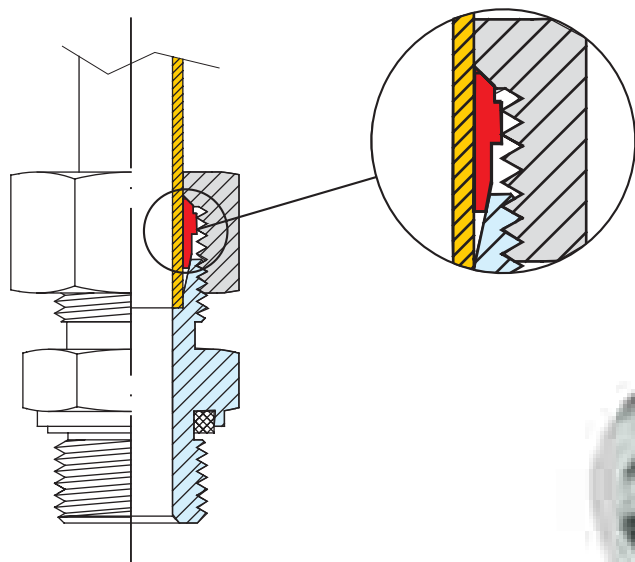
Ala DIN
Din 2353





Nuova Road Presenta Ala DIN

Nuova Road Presents Ala DIN



● DIN 2353

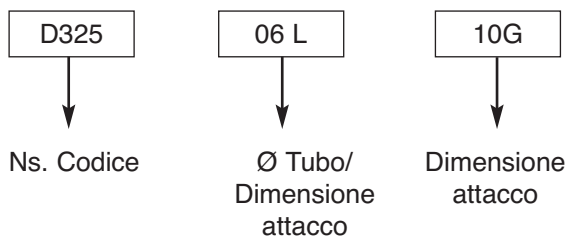
Struttura del codice e relativo utilizzo

Code symbols and relative use

Per una corretta gestione dei vostri ordini usufruire delle seguenti indicazioni:

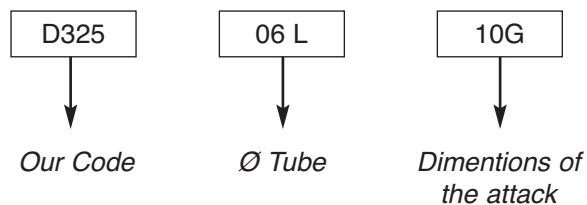
To handle yours orders properly, please use the following indications:

Esempio



* N = NPTF
G = Gas
U = Unf
M = Metrico

Example



* N = NPTF
G = Gas
U = Unf
M = Metric

Ai fini di garantire una corretta evasione dei Vostrî ordini nel pi breve tempo possibile, si consiglia di attenersi ai riferimenti a catalogo. Tutti i raccordi Din rappresentati sono forniti **solo corpo** senza anello e dado.

In order to fill your orders as soon as possible, you are kindly requested to use the catalogues references. All represented DIN fittings are supplied **only body** without ring and nut.

Costruzione del Raccordo

Fitting Construction

Nuova Road decide di studiare ed inserire nella sua produzione la serie di raccordi **DIN** secondo le Norme ISO 8434-4 "Metallic tube connections for fluid power and general use: cone connection to 24°". Tale esecuzione è meglio conosciuta come serie **DIN 2353**.

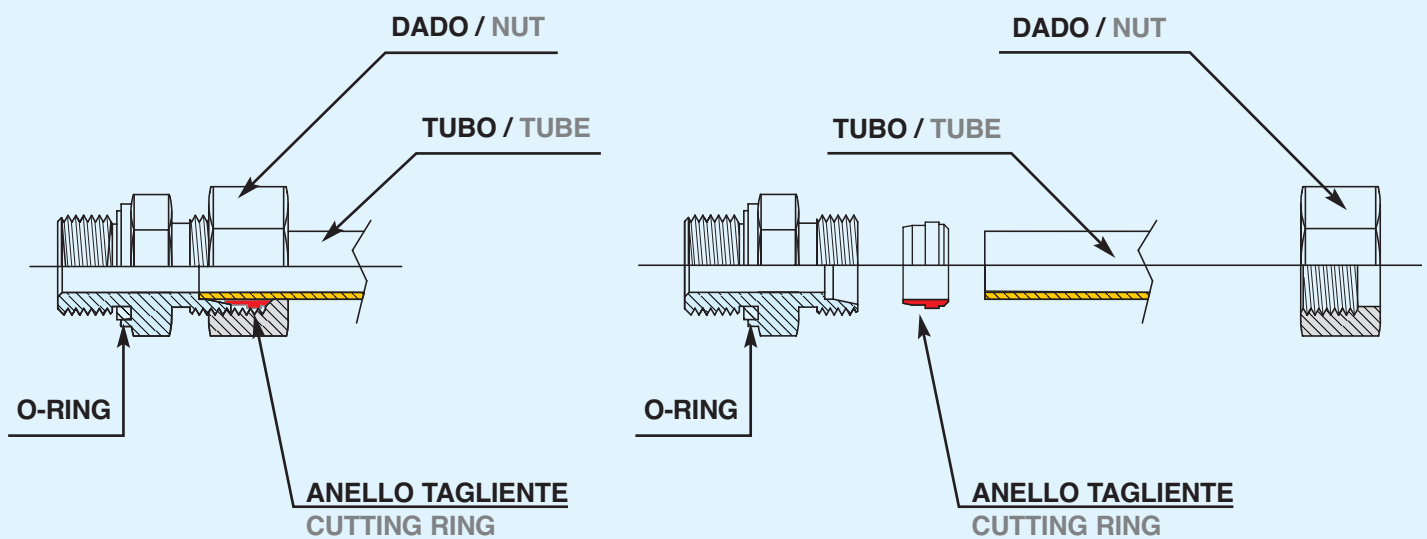
Con l'introduzione di tale serie si completa la gamma di raccordi oleodinamici. Questa nuova gamma di raccordi per tubi rigidi (da un diametro min. di 4 mm ad un max. di 42 mm), trova l'applicazione sia nei circuiti per fluidi dinamici, sia nei circuiti ad alte pressioni d'esercizio che in quelli generici.

Il raccordo "**DIN 2353**" è formato da tre pezzi, così come rappresentato dal grafico, ed evidenzia caratteristiche meccaniche e idrauliche in quanto, durante il serraggio del dado, l'anello tagliante incide il tubo ottenendo una perfetta tenuta evitandone lo sfilamento.

Nuova Road decides to study and include in its production the **DIN** fittings series, according to ISO 8434-4 "Metallic tube connections for fluid power and general use: cone connection to 24°". This production is better known as **DIN 2353** series.

With the introduction of this series the range of hydraulic fittings is complete. This last range of fittings for steel hoses (min. diameter 4 mm – max diameter 42 mm), can be applied in dynamic fluids circuits, in high pressure circuits and in generic circuits as well.

The **DIN 2353** fitting is formed by three pieces, as represented in the graph, and shows mechanical and hydraulic details as, during the nuts closure, the ring cuts the hose obtaining a perfect holding avoiding the loss it.



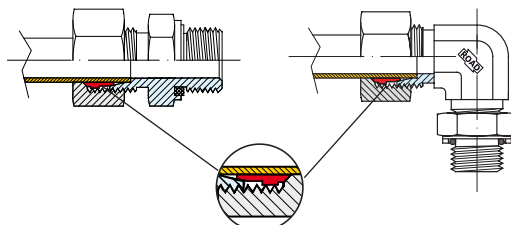
La bussola brasata, all'estremità del tubo, la rende più solidale e fornisce una maggiore resistenza alle vibrazioni e agli impulsi di pressione.

The use of a brazed sleeve at the end on the tube offer a higher endurance to the vibrations and to the pressure impulses.

I Componenti

The Components

- Corpo del raccordo
- Dado di serraggio
- Anello tagliante
- O-RING



- Fitting Body ●
- Nut ●
- Cutting ring ●
- O-RING ●

● Corpo del raccordo e Materiale

Il corpo del raccordo è realizzato in acciaio al carbonio. Sia le barre che il materiale stampato per le varie forme del raccordo (90°-T-X-45°) hanno impresso il ns. logo.

● Anello tagliante

E' realizzato da barra in Acciaio al Carbonio trattato garantendone una elevata resistenza. Durante il serraggio del dado l'anello si deforma adattandosi alla sede realizzata sui raccordi, incide il tubo evitandone lo sfilamento.

● O-RING

Sono realizzati in Nitrile (NBR) con durezza SHORE "A" di 90+/-5 idonea per temperature da -020°C a +120°C.

● Dado di serraggio

E' realizzato in acciaio al Carbonio.

● Finitura superficiale/protezione

Tutti i raccordi sono sottoposti a trattamento galvanico (zincatura) con spessore da 8 a 14 micron che permette di ottenere un'alta resistenza alla corrosione. La zincatura viene eseguita tenendo conto delle normative vigenti.

● Protezione

Dove necessario, le parti filettate, sono protette da appositi tappi in plastica.

● Valori di pressione

I valori di pressione teorici per i corpi dei raccordi sono secondo la Norma ISO 8434 e riportati nelle tabelle del catalogo in corrispondenza dei singoli articoli indicate con Wp= pressione nominale.

● Fitting Body characteristics

The body is obtained from carbon steel. Both drawn bars and stamped shapes (90° - TEE - CROSS - 45°) have company's logo printed.

● Cutting ring

It is obtained from treated carbon steel bars, guarantying high resistance. During nut closure the ring buckles adapting itself perfectly on the fitting base created, cutting the hose and avoiding the loss of it.

● O-RING

They are made of carbon nitrile "NBR" with hardness shore "A" 90 ± 5 valid for temperatures from -20°C to +120°C.

● Nut

It is obtained from carbon steel.

● Plating

All fittings are zinc-plated with thickness from 8 to 14 micron which guarantees high endurance to corrosion.

The plating is processed according to the rules in force.

● Protection

All threads, if required, are protected by plastic plugs.

● Working pressure values

The working pressure values for fitting bodies follows ISO 8434 rules as indicated on catalogue tables in correspondence of the single articles and resumed in the following table (WP= nominal pressure).

Serie Series	Diametro esterno del tubo / External diameter mm	Pressione d'esercizio / Pressure of exercise	
		MPa	(bar)
L	15	25	(250)
	Da 18 a 22 incluso / From 18 to 22 included	16	(160)
	Da 28 a 42 incluso / From 28 to 42 included	10	(100)
S	Da 06 a 12 incluso / From 06 to 12 included	63	(630)
	Da 16 a 25 incluso / From 16 to 25 included	40	(400)
	Da 30 a 38 incluso / From 30 to 38 included	25	(250)

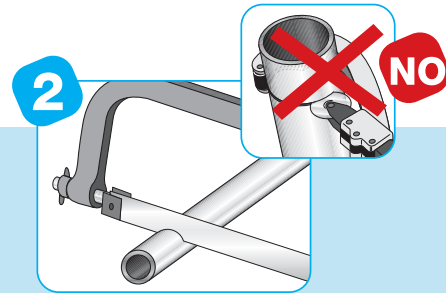
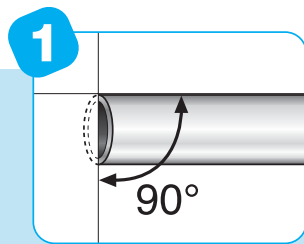
I valori di pressione indicati in tabella sono validi con un carico costante e con temperature comprese tra i -20° e i +120°
The pressure values indicated in the over displayed table, are valid only under a constant burden and at temperatures between -20°C and +120°C

Istruzioni di Montaggio e Preparazione del Tubo

Assembling instructions and tube preparation

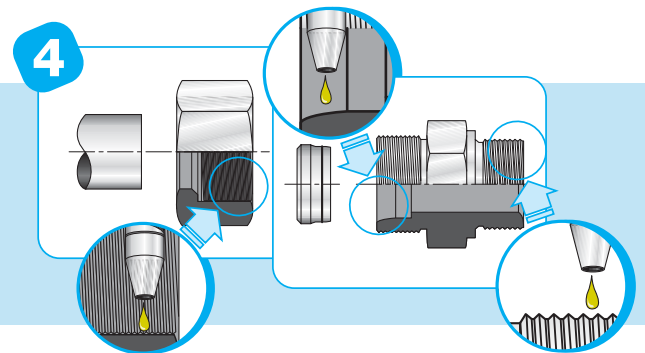
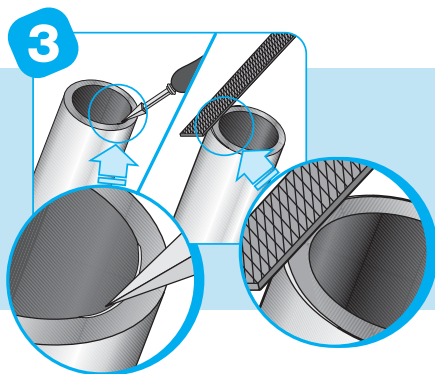
Con una squadra posizionare il tubo per un taglio di 90° utilizzando un seghetto apposito e non una tagliatubo, ed eliminare le eventuali bave.

Set the tube in the correct 90° position using a square, in order to cut it with a proper hacksaw instead of a normal saw used for the tubes; after that, debur the tube and remove all the metal particles.



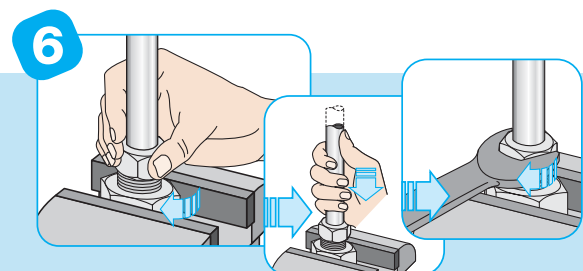
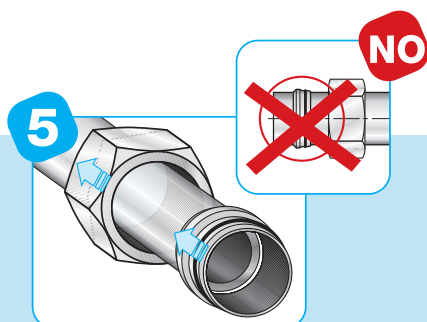
Lubrificare la filettatura, la sede a 24° e l'anello tagliante. Inserire in sequenza dado e anello, e verificare che quest'ultimo abbia il diametro minore verso l'estremità del tubo.

Oil the thread, the 24° seat and the cutting ring. Insert subsequently the nut and the ring, and make sure that the last one is positioned with the minor diameter orientated towards the end of the tube



Spingere il tubo nella sede del raccordo, avvitare a mano fino a sentire accoppiare la sede dell'anello al dado. Utilizzare una chiave appropriata per assicurare il serraggio corretto, stringendo di un giro e 1/4 o un giro e 1/2 senza far ruotare il tubo.

Push the tube in the seat of the fitting, screw it down by hand till it's clear that the ring has been joined to the nut. Use a proper key to fix it correctly, screw it for about 1 and 1/4 or 1 and 1/2 rounds, without making the tube turning too

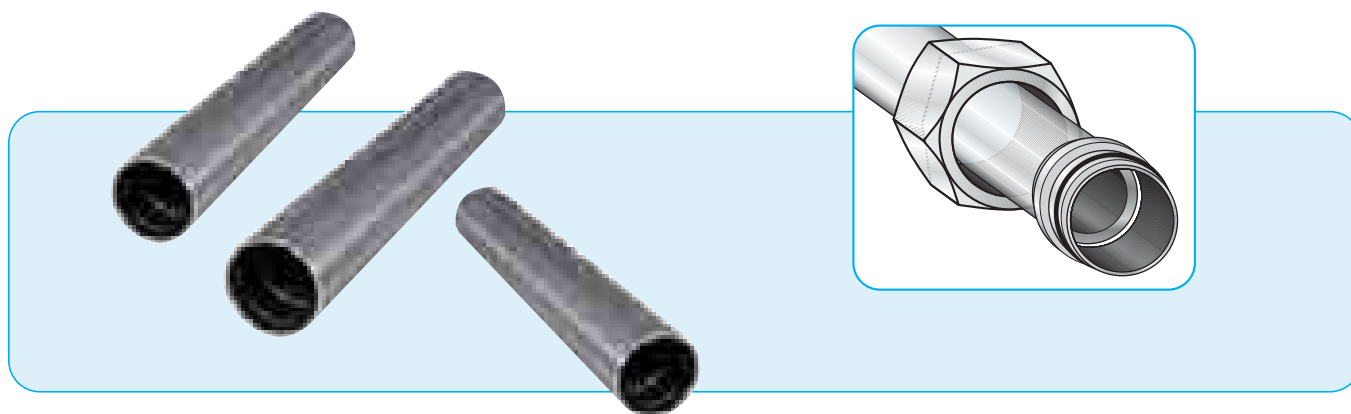


Scelta Tubo

Choice of the Tube

Si consiglia la scelta dei tubi in acciaio trafilato a freddo, ricotti senza saldatura che garantiscono deformazioni perfette. Onde evitare inconvenienti controllare che nel tubo non ci siano rigature longitudinali che possano compromettere la tenuta del raccordo montato.

We suggest the choice of cold drawn steel tubes, heated and without welding which assures perfect deformation. In order to avoid any inconvenience, it must be checked that no longitudinal rulling are in the tube, which may compromise the coupling of the assembled union.



Ø tubo tube mm	4	4	6	6	6	8	8	8	8	10	10	10	10	10	12	12	12	12	12	12	12	14	14	14	14	14	15	15	15	16	16	16	16	18
tolleranza tolerance mm	±0.1														±0.08																			
spessore thickness mm	0,5	1	1	1,5	2	1	1,5	2	2,5	1	1,5	2	2,5	3	1	1,5	2	2,5	3	3,5	1,5	2	2,5	3	3,5	1,5	2	3	1,5	2	2,5	3	1,5	

Materiale impiegato

	UNI 10087	UNI 4838	DIN 1651	ASTM A29
	UNI EN 10277-3			
anello cutting ring	11 SMnPb 37	CF 9 SMnPb 36	9 SMnPb 36	12 L14
dado nut	11 SMnPb 37	CF 9 SMnPb 36	9 SMnPb 36	12 L14
corpo body	11 SMnPb 37	CF 9 SMnPb 36	9 SMnPb 36	12 L14

Indice - Index

Ala DIN ISO 8434-1

COMPONENTI DIN DIN COMPONENTS

D300



Pag. 202

D301



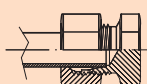
Pag. 202

D302



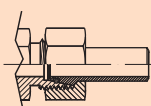
Pag. 203

D303



Pag. 203

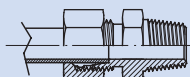
D304



Pag. 204

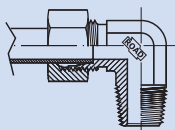
RACCORDO DIN CON ESTREMITÀ FILETTATA NPT/BSPT DIN UNIONS WITH MALE NPT/BSPT

**D305 NPT
D306 BSPT**



Pag. 205/206

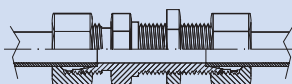
**D357 BSPT
D358 NPT**



Pag. 207/208

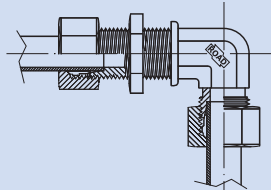
RACCORDI DIN PASSAPARATIA BULKHEAD DIN UNION

D307



Pag. 243

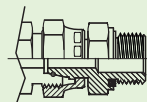
D308



Pag. 244

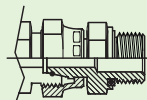
RACCORDO DIRITTO CON DADO GIREVOLE TERMINALE METRICO/BSPP STRAIGHT END UNIONS WITH ROTATING NUT AND MALE CYLINDRICAL METRIC / BSPP CONNECTION

D309



Pag. 209

D310



Pag. 210

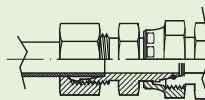
RACCORDI DIN INTERMEDIO DI RIDUZIONE/PORTAMANOMETRO CON DADO GIREVOLE STRAIGHT INTERMEDIATE REDUCTION UNIONS WITH ROTATING NUT/MANOMETER SUPPORT

D312



Pag. 211

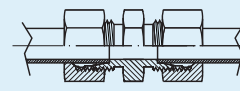
D313



Pag. 212

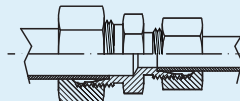
RACCORDI DIN INTERMEDIO DIN UNIONS INTERMEDIATE

D314



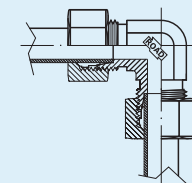
Pag. 214

D315



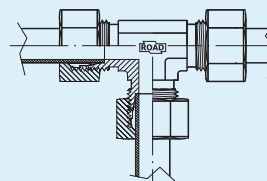
Pag. 215

D316



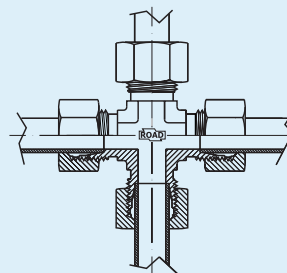
Pag. 216

D317



Pag. 217

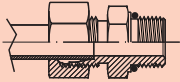
D318



Pag. 218

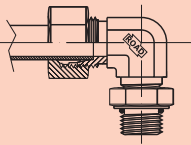
**RACCORDI DIN CON
FILETTATURA UNF
DIN UNIONS WITH MALE
THREAD UNF**

D319



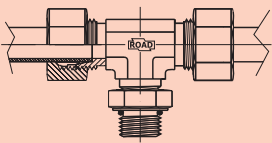
Pag. 219

D320



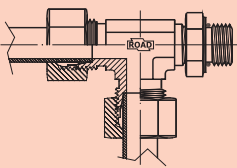
Pag. 220

D321



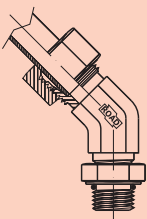
Pag. 221

D322



Pag. 222

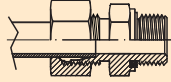
D323



Pag. 223

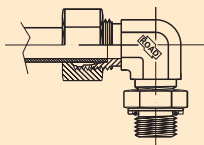
**RACCORDI DIN CON
FILETTATURA BSPP
DIN UNIONS WITH MALE
THREAD BSPP**

D324



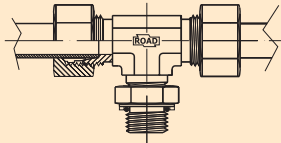
Pag. 224

D325



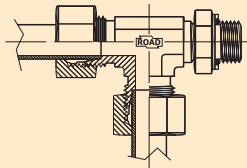
Pag. 225

D326



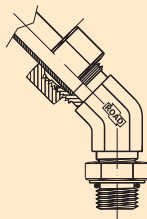
Pag. 226

D327



Pag. 227

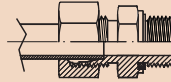
D328



Pag. 228

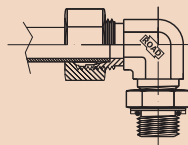
**RACCORDI DIN CON FILETTATURA
METRICA ISO 3852-1
DIN UNIONS WITH MALE THREAD
METRIC ISO 3852-1**

D329



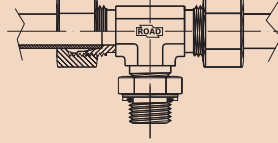
Pag. 229

D330



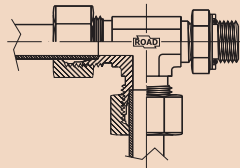
Pag. 230

D331



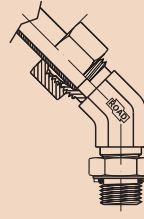
Pag. 231

D332



Pag. 232

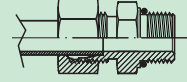
D333



Pag. 233

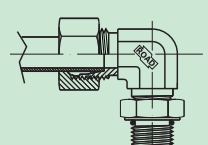
**RACCORDI DIN CON FILETTATURA
METRICA ISO 3852-1
DIN UNIONS WITH MALE THREAD
METRIC ISO 6149-2**

D379



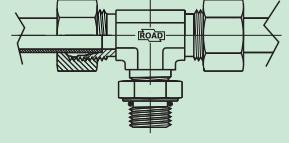
Pag. 234

D380



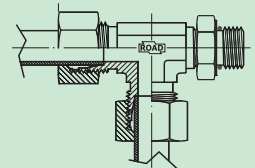
Pag. 235

D381



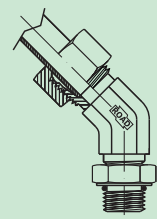
Pag. 236

D382



Pag. 237

D383



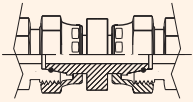
Pag. 238

Indice - Index

Ala DIN ISO 8434-1

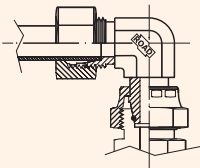
**RACCORDI DIN CON DADO
GIREVOLE**
DIN UNIONS SWIVEL NUT

D334



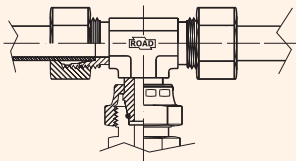
Pag. 239

D335



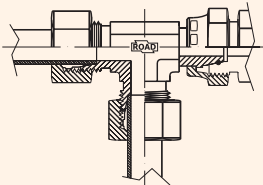
Pag. 240

D336



Pag. 241

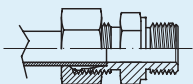
D337



Pag. 242

**RACCORDO DIN CON
FILETTATURA BSPT**
*DIN UNIONS WITH MALE
THREAD BSPP*

D344



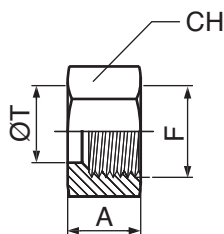
Pag. 246





D300

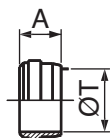
DADO
NUT



SERIE	T	CODE	F	CH	A
	Ø			mm	mm
LL	4	D300-04LL	M8x1	10	11,5
LL	6	D300-06LL	M10x1	12	12
LL	8	D300-08LL	M12x1	14	12,5
L	6	D300-06L	M12x1,5	14	14,5
L	8	D300-08L	M14x1,5	17	14,5
L	10	D300-10L	M16x1,5	19	15,5
L	12	D300-12L	M18x1,5	22	15,5
L	15	D300-15L	M22x1,5	27	17
L	18	D300-18L	M26x1,5	32	18
L	22	D300-22L	M30x2	36	20
L	28	D300-28L	M36x2	41	21
L	35	D300-35L	M45x2	50	24
L	42	D300-42L	M52x2	60	24
S	6	D300-06S	M14x1,5	17	16,5
S	8	D300-08S	M16x1,5	19	16,5
S	10	D300-10S	M18x1,5	22	17,5
S	12	D300-12S	M20x1,5	24	17,5
S	14	D300-14S	M22x1,5	27	20,5
S	16	D300-16S	M22x1,5	30	20,5
S	20	D300-20S	M30x2	36	24
S	25	D300-25S	M36x2	46	27
S	30	D300-30S	M42x2	50	29
S	38	D300-38S	M52x2	60	32,5

D301

ANELLI
CUTTING RING

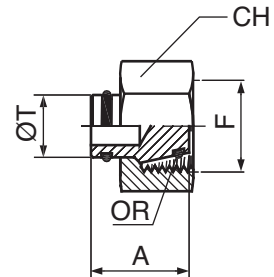


SERIE	T	CODE	A
	Ø		mm
LL	4	D301-04LL	6
LL	6	D301-06LL	7
LL	8	D301-08LL	7
L/S	6	D301-06L/S	9,5
L/S	8	D301-08L/S	9,5
L/S	10	D301-10L/S	10
L/S	12	D301-12L/S	10
L	15	D301-15L	10
L	18	D301-18L	10
L	22	D301-22L	10,5
L	28	D301-28L	10,5
L	35	D301-35L	13
L	42	D301-42L	13,5
S	14	D301-14S	10
S	16	D301-16S	10,5
S	20	D301-20S	12,5
S	25	D301-25S	12,5
S	30	D301-30S	13
S	38	D301-38S	13,5

D302

TAPPO FEMMINA FEMALE CAP

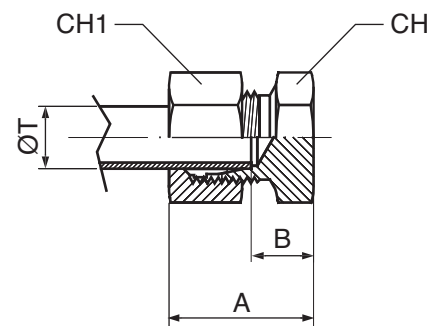
SERIE	T Ø	CODE	F	CH mm	A mm	Pressure Wp
L	6	D302-06L	M12x1,5	14	18,5	315
L	8	D302-08L	M14x1,5	17	18	315
L	10	D302-10L	M16x1,5	19	19,5	315
L	12	D302-12L	M18x1,5	22	19	315
L	15	D302-15L	M22x1,5	27	19	315
L	18	D302-18L	M26x1,5	32	22	315
L	22	D302-22L	M30x2	36	22	160
L	28	D302-28L	M36x2	41	23,5	160
L	35	D302-35L	M45x2	50	27	160
L	42	D302-42L	M52x2	60	27,5	160
S	6	D302-6S	M14x1,5	17	18,5	630
S	8	D302-8S	M16x1,5	19	18	630
S	10	D302-10S	M18x1,5	22	19,5	630
S	12	D302-12S	M20x1,5	24	19	630
S	14	D302-14S	M22x1,5	27	21	630
S	16	D302-16S	M24x1,5	30	22	400
S	20	D302-20S	M30x2	36	26,5	400
S	25	D302-25S	M36x2	46	27,5	400
S	30	D302-30S	M42x2	50	28,5	400
S	38	D302-38S	M52x2	60	32,5	315



D303

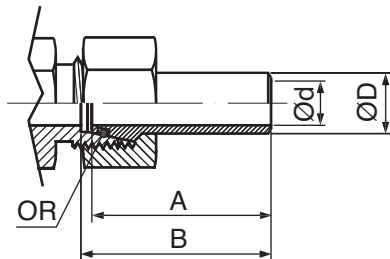
TAPPO MASCHIO MALE CAP

SERIE	T Ø	CODE	CH mm	CH1 mm	A mm	B mm	Pressure Wp
L	6	D303-06L	12	14	22	7	315
L	8	D303-08L	14	17	23	8	315
L	10	D303-10L	17	19	24	9	315
L	12	D303-12L	19	22	25	10	315
L	15	D303-15L	24	27	26	11	315
L	18	D303-18L	27	32	28	11,5	315
L	22	D303-22L	32	36	30	13,5	160
L	28	D303-28L	41	41	31	14,5	160
L	35	D303-35L	46	50	36	14,5	160
L	42	D303-42L	55	60	39	16	160
S	6	D303-06S	14	17	26	11	630
S	8	D303-08S	17	19	28	13	630
S	10	D303-10S	19	22	29	12,5	630
S	12	D303-12S	22	24	24	14,5	630
S	14	D303-14S	24	27	33	15	630
S	16	D303-16S	27	30	34	15,5	400
S	20	D303-20S	32	36	39	17,5	400
S	25	D303-25S	41	46	44	20	400
S	30	D303-30S	46	50	47	20,5	400
S	38	D303-38S	55	60	54	23	315



D304

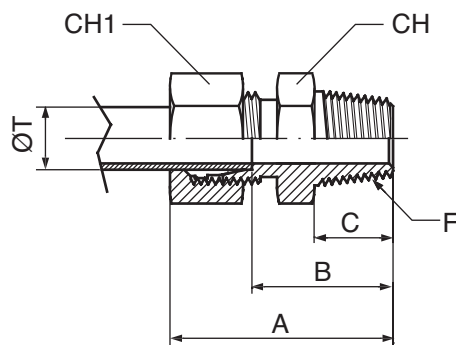
**CODOLI SALDATI
WELDING NIPPLES**



SERIE	Tubo Din		CODE	A mm	B mm	D mm	d mm	Pressure Wp
	\varnothing	SP						
S	10	2	D304-10S	31,5	33,5	10	6	460
S	12	2,5	D304-12S	31,5	33,5	12	7	475
S	14	3	D304-14S	37,5	40	14	8	485
S	16	3	D304-16S	37,5	40,5	16	10	435
S	20	4	D304-20S	43	46,5	20	12	460
S	25	4	D304-25S	48	53	25	17	360
S	30	5	D304-30S	51,5	57,5	30	20	390
S	38	6	D304-38S	55	64	38	26	315

D305

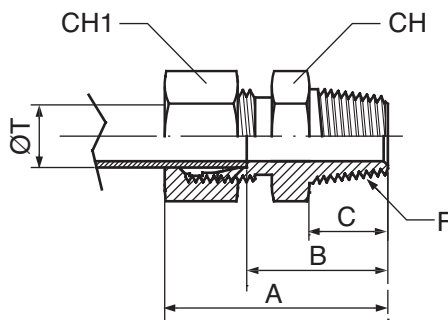
**RACCORDO DIRITTO CON
FILETTATURA TERMINALE NPT
STRAIGHT END UNION WITH NPT
THREAD**



SERIE	T	CODE	F		CH	CH1	C	A	B	Pressure
	Ø				mm	mm	mm	mm	mm	Wp
L	6	D305 - 06L -10N	1/8-27	NPT	12	14	10	32	17	315
L	6	D305 - 06L -13N	1/4-18	NPT	17	14	15	38	23	315
L	8	D305 - 08L -13N	1/4-18	NPT	17	17	15	38	23	315
L	10	D305 - 10L -13N	1/4-18	NPT	17	19	15	39	24	315
L	10	D305 - 10L -17N	3/8-18	NPT	19	19	15,5	39,5	25	315
L	12	D305 - 12L -17N	3/8-18	NPT	19	22	15,5	40	25	315
L	12	D305 - 12L -13N	1/4-18	NPT	19	22	15	40	25	315
L	12	D305 - 12L -21N	1/2-14	NPT	24	22	20	45	30	315
L	15	D305 - 15L -21N	1/2-14	NPT	24	27	20	46	31	315
L	18	D305 - 18L -21N	1/2-14	NPT	27	32	20	48	31,5	315
L	22	D305 - 22L -26N	3/4-14	NPT	32	36	20	50	33,5	160
L	28	D305 - 28L -33N	1-11	NPT	41	41	25	56	39,5	160
L	35	D305 - 35L -42N	1 1/4-11	NPT	46	50	25,5	62	40,5	160
L	42	D305 - 42L -48N	1 1/2-11	NPT	55	60	26	65	42	160
S	6	D305 - 06S -13N	1/4-18	NPT	17	17	15	43	28	630
S	8	D305 - 08S -13N	1/4-18	NPT	17	19	15	43	28	630
S	10	D305 - 10S -13N	1/4-18	NPT	19	22	15	44	27,5	630
S	10	D305 - 10S -17N	3/8-18	NPT	19	22	15,5	44	27,5	630
S	12	D305 - 12S -17N	3/8-18	NPT	22	24	15,5	46	29,5	630
S	12	D305 - 12S -21N	1/2-14	NPT	24	24	20	51	34,5	630
S	14	D305 - 14S -21N	1/2-14	NPT	24	27	20	54	36	630
S	16	D305 - 16S -21N	1/2-14	NPT	27	30	20	54	35,5	400
S	20	D305 - 20S -26N	3/4-14	NPT	32	36	20	59	37,5	400
S	25	D305 - 25S -33N	1-11	NPT	41	46	25	69	45	400
S	30	D305 - 30S -42N	1 1/4-11	NPT	46	50	25,5	73	46,5	400
S	38	D305 - 38S -48N	1 1/2-11	NPT	55	60	26	80	49	315

D306

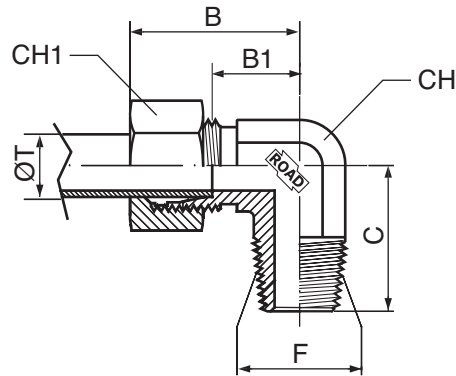
**RACCORDO DIRITTO CON
FILETTATURA TERMINALE BSPT**
**STRAIGHT END UNION WITH BSPT
THREAD**



SERIE	T	CODE	F	CH	CH1	C	A	B	Pressure	
	Ø			mm	mm	mm	mm	mm	Wp	
L	06	D306-06L-10G	1/8-28	BSPT	12	14	10	32	17	315
L	06	D306-06L-13G	1/4-19	BSPT	17	14	13	36	21	315
L	08	D306-08L-13G	1/4-19	BSPT	17	17	13	36	21	315
L	10	D306-10L-13G	1/4-19	BSPT	17	19	13	37	22	315
L	10	D306-10L-17G	3/8-19	BSPT	19	19	13	38	23	315
L	12	D306-12L-13G	1/4-19	BSPT	19	22	13	38	23	315
L	12	D306-12L-17G	3/8-19	BSPT	19	22	13	38	23	315
L	12	D306-12L-21G	1/2-14	BSPT	24	22	16	41	26	315
L	15	D306-15L-17G	3/8-19	BSPT	24	27	13	39	24	315
L	15	D306-15L-21G	1/2-14	BSPT	24	27	16	42	27	315
L	18	D306-18L-21G	1/2-14	BSPT	27	32	16	44	27,5	315
L	22	D306-22L-26G	3/4-14	BSPT	32	36	18	48	31,5	160
S	06	D306-06S-13G	1/4-19	BSPT	17	17	13	41	26	400
S	08	D306-08S-13G	1/4-19	BSPT	17	19	13	41	26	400
S	10	D306-10S-17G	3/8-19	BSPT	19	22	13	42	25,5	400
S	12	D306-12S-17G	3/8-19	BSPT	22	24	13	44	27,5	400
S	16	D306-16S-21G	1/2-14	BSPT	27	30	16	50	31,5	400
S	20	D306-20S-26G	3/4-14	BSPT	32	36	18	57	35,5	400

D357

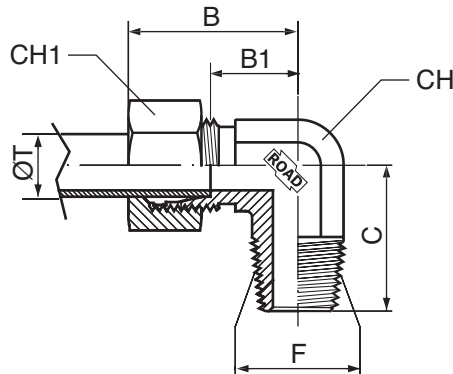
**RACCORDO A 90° CON
FILETTATURA TERMINALE BSPT
90° END UNION WITH BSPT
THREAD**



SERIE	T	CODE	F		CH	CH1	C	B	B1	Pressure
	Ø				mm	mm	mm	mm	mm	Wp
L	6	D357-06L-10G	1/8-28	BSPT	12	14	20	27	12	315
L	8	D357-08L-13G	1/4-19	BSPT	12	17	26	29	14	315
L	10	D357-10L-13G	1/4-19	BSPT	14	19	27	30	15	315
L	12	D357-12L-17G	3/8-19	BSPT	17	22	28	32	17	315
L	15	D357-15L-21G	1/2-14	BSPT	19	27	34	36	21	315
L	18	D357-18L-21G	1/2-14	BSPT	24	32	36	40	23,5	315
L	22	D357-22L-26G	3/4-14	BSPT	27	36	42	44	27,5	160
L	28	D357-28L-33G	1-11	BSPT	36	41	48	47	30,5	160
L	35	D357-35L-42G	1 1/4-11	BSPT	41	50	54	56	34,5	160
L	42	D357-42L-48G	1 1/2-11	BSPT	50	60	61	63	40	160
S	6	D357-06S-13G	1/4-19	BSPT	12	17	26	31	16	630
S	8	D357-08S-13G	1/4-19	BSPT	14	19	27	32	17	630
S	10	D357-10S-17G	3/8-19	BSPT	17	22	28	34	17,5	630
S	12	D357-12S-17G	3/8-19	BSPT	17	24	31	38	21,5	630
S	14	D357-14S-21G	1/2-14	BSPT	19	27	32	40	22	630
S	16	D357-16S-21G	1/2-14	BSPT	24	30	32	43	24,5	400
S	20	D357-20S-26G	3/4-14	BSPT	27	36	42	48	26,5	400
S	25	D357-25S-33G	1-11	BSPT	36	46	48	54	30	400
S	30	D357-30S-42G	1 1/4-11	BSPT	41	50	54	62	35,5	400
S	38	D357-38S-48G	1 1/2-11	BSPT	50	60	61	72	41	315

D358

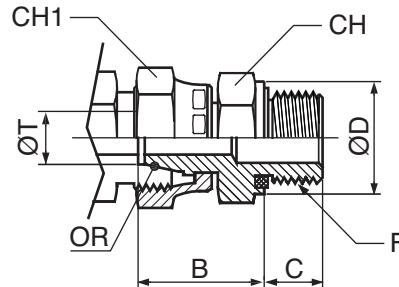
**RACCORDO A 90° CON
FILETTATURA TERMINALE NPT
90° UNION WITH NPT THREAD**



SERIE	T	CODE	F	CH	CH1	C	B	B1	Pressure	
	Ø			mm	mm	mm	mm	mm	Wp	
L	6	D358-06L-10N	1/8-27	NPT	12	14	20	27	12	315
L	8	D358-08L-13N	1/4-18	NPT	12	17	26	29	14	315
L	10	D358-10L-13N	1/4-18	NPT	14	19	27	30	15	315
L	12	D358-12L-17N	3/8-18	NPT	17	22	28	32	17	315
L	15	D358-15L-21N	1/2-14	NPT	19	27	34	36	21	315
L	18	D358-18L-21N	1/2-14	NPT	24	32	36	40	23,5	315
L	22	D358-22L-26N	3/4-14	NPT	27	36	42	44	27,5	160
L	28	D358-28L-33N	1-11	NPT	36	41	48	47	30,5	160
L	35	D358-35L-42N	1 1/4-11	NPT	41	50	54	56	34,5	160
L	42	D358-42L-48N	1 1/2-11	NPT	50	60	61	63	40	160
S	6	D358-06S-13N	1/4-18	NPT	12	17	26	31	16	630
S	8	D358-08S-13N	1/4-18	NPT	14	19	27	32	17	630
S	10	D358-10S-17N	3/8-18	NPT	17	22	28	34	17,5	630
S	12	D358-12S-17N	3/8-18	NPT	17	24	31	38	21,5	630
S	14	D358-14S-21N	1/2-14	NPT	19	27	32	40	22	630
S	16	D358-16S-21N	1/2-14	NPT	24	30	32	43	24,5	400
S	20	D358-20S-26N	3/4-14	NPT	27	36	42	48	26,5	400
S	25	D358-25S-33N	1-11	NPT	36	46	48	54	30	400
S	30	D358-30S-42N	1 1/4-11	NPT	41	50	54	62	35,5	400
S	38	D358-38S-48N	1 1/2-11	NPT	50	60	61	72	41	315

D309

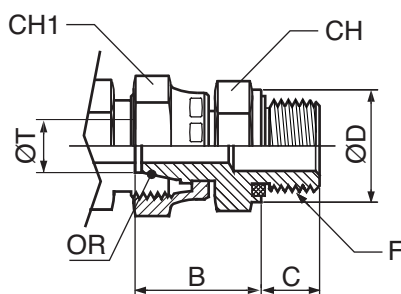
**RACCORDO DIRITTO CON DADO
GIREVOLE E FILETTATURA
TERMINALE METRICA**
**STRAIGHT END UNION WITH
SWIVEL NUT AND METRIC THREAD**



SERIE	T	CODE	F	CH	CH1	C	B	D	Pressure
	Ø			mm	mm	mm	mm	mm	Wp
L	6	D309-06L-10M	M10x1	14	14	8	24,5	13,9	315
L	8	D309-08L-12M	M12X1,5	17	17	12	26,5	16,9	315
L	10	D309-10L-14M	M14X1,5	19	19	12	27,5	18,9	315
L	12	D309-12L-16M	M16X1,5	22	22	12	30,5	21,9	315
L	15	D309-15L-18M	M18X1,5	24	27	12	31,5	23,9	315
L	18	D309-18L-22M	M22X1,5	27	32	14	31,5	26,9	315
L	22	D309-22L-26M	M26X1,5	32	36	16	32,5	31,9	160
L	28	D309-28L-33M	M33X2	41	41	18	35	39,9	160
L	35	D309-35L-42M	M42X2	50	50	20	42,5	49,9	160
L	42	D309-42L-48M	M48X2	55	60	22	46,5	54,9	160
S	6	D309-06S-12M	M12X1,5	17	17	12	27	16,9	630
S	8	D309-08S-14M	M14X1,5	19	19	12	29,5	18,9	630
S	10	D309-10S-16M	M16X1,5	22	22	12	32	21,9	630
S	12	D309-12S-18M	M18X1,5	24	24	12	34	23,9	630
S	14	D309-14S-20M	M20X1,5	27	27	14	36,5	25,9	630
S	16	D309-16S-22M	M22X1,5	27	30	14	37	26,9	400
S	20	D309-20S-27M	M27X2	32	36	16	43	31,9	400
S	25	D309-25S-33M	M33X2	41	46	18	48	39,9	400
S	30	D309-30S-42M	M42X2	50	50	20	51	49,9	400
S	38	D309-38S-48M	M48X2	55	60	22	60	54,9	315

D310

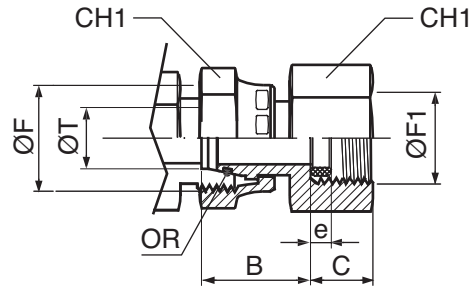
**RACCORDO DIRITTO CON DADO
GIREVOLE E FILETTATURA
TERMINALE BSPP**
**STRAIGHT END UNION WITH
SWIVEL NUT AND BSPP THREAD**



SERIE	T	CODE	F	CH	CH1	C	B	D	Pressure
	Ø			mm	mm	mm	mm	mm	Wp
L	6	D310-06L-10G	1/8-28	14	14	8	24,5	13,9	315
L	8	D310-08L-13G	1/4-19	19	17	12	29,5	18,9	315
L	10	D310-10L-13G	1/4-19	19	19	12	27,5	18,9	315
L	12	D310-12L-17G	3/8-19	22	22	12	34	21,9	315
L	15	D310-15L-21G	1/2-14	27	27	14	32	26,9	315
L	18	D310-18L-21G	1/2-14	27	32	14	31,5	26,9	315
L	22	D310-22L-26G	3/4-14	32	36	16	32	31,9	160
L	28	D310-28L-33G	1-11	41	41	18	35	39,9	160
L	35	D310-35L-42G	1 1/4-11	50	50	20	42,5	49,9	160
L	42	D310-42L-48G	1 1/2-11	55	60	22	46,5	54,9	160
S	6	D310-06S-13G	1/4-19	19	17	12	27	18,9	630
S	8	D310-08S-13G	1/4-19	19	19	12	29,5	18,9	630
S	10	D310-10S-17G	3/8-19	22	22	12	32	21,9	630
S	12	D310-12S-17G	3/8-19	22	24	12	34	21,9	630
S	14	D310-14S-21G	1/2-14	27	27	14	36,5	26,9	630
S	16	D310-16S-21G	1/2-14	27	30	14	37	26,9	400
S	20	D310-20S-26G	3/4-14	32	36	16	42,5	31,9	400
S	25	D310-25S-33G	1-11	41	46	18	47,5	39,9	400
S	30	D310-30S-42G	1 1/4-11	50	50	20	51	49,9	400
S	38	D310-38S-48G	1 1/2-11	55	60	22	59,5	54,9	315

D312

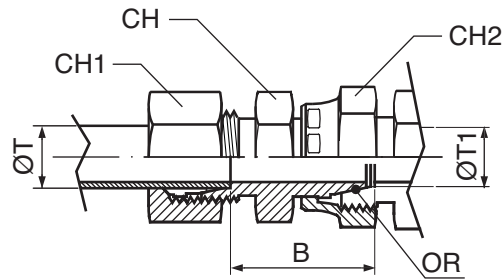
**RACCORDO DIRITTO
PORTAMANOMETRO CON DADO
GIREVOLE**
**STRAIGHT END UNION
MANOMETER HOLDER WITH
SWIVEL NUT**



SERIE	T	CODE	F	F1	CH	CH1	C	B	e	Pressure
	Ø				mm	mm	mm	mm		Wp
L	6	D312-06L-13G	12x1,5	1/4-19	19	14	14,5	21	4,5	315
L	8	D312-08L-13G	14x1,5	1/4-19	19	17	14,5	21,5	4,5	315
L	10	D312-10L-13G	16x1,5	1/4-19	19	19	14,5	22	4,5	315
L	12	D312-12L-13G	18x1,5	1/4-19	19	22	14,5	22	4,5	315
S	6	D312-06S-21G	14x1,5	1/2-14	27	17	20	23	5	630
S	8	D312-08S-21G	16x1,5	1/2-14	27	19	20	23,5	5	630
S	10	D312-10S-21G	18x1,5	1/2-14	27	22	20	23,5	5	630
S	12	D312-12S-21G	20x1,5	1/2-14	27	24	20	25	5	630

D313

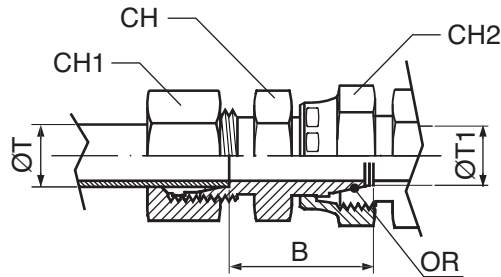
**RACCORDO DIRITTO DI RIDUZIONE
CON DADO GIREVOLE**
**STRAIGHT END REDUCTION UNION
WITH SWIVEL NUT**



SERIE	T1	T	CODE	CH	CH1	CH2	B	Pressure
	Ø	Ø		mm	mm	mm	mm	Wp
L	8	6	D313-08L-06L	12	14	17	24,5	315
L	10	6	D313-10L-06L	14	14	19	25	315
L	10	8	D313-10L-08L	14	17	19	25	315
L	12	6	D313-12L-06L	17	14	22	26,5	315
L	12	8	D313-12L-08L	17	17	22	26,5	315
L	12	10	D313-12L-10L	17	19	22	27,5	315
L	15	6	D313-15L-06L	19	14	27	28,5	315
L	15	8	D313-15L-08L	19	17	27	28,5	315
L	15	10	D313-15L-10L	19	19	27	29,5	315
L	15	12	D313-15L-12L	19	22	27	29,5	315
L	18	6	D313-18L-06L	24	14	32	29,5	315
L	18	8	D313-18L-08L	24	17	32	29,5	315
L	18	10	D313-18L-10L	24	19	32	30,5	315
L	18	12	D313-18L-12L	24	22	32	30,5	315
L	18	15	D313-18L-15L	24	27	32	31,5	315
L	22	6	D313-22L-06L	27	14	36	32	160
L	22	8	D313-22L-08L	27	17	36	32	160
L	22	10	D313-22L-10L	27	19	36	33	160
L	22	12	D313-22L-12L	27	22	36	33	160
L	22	15	D313-22L-15L	27	27	36	34	160
L	22	18	D313-22L-18L	27	32	36	33,5	160
L	28	6	D313-28L-06L	32	14	41	34	160
L	28	8	D313-28L-08L	32	17	41	34	160
L	28	10	D313-28L-10L	32	19	41	35	160
L	28	12	D313-28L-12L	32	22	41	35	160
L	28	15	D313-28L-15L	32	27	41	36	160
L	28	18	D313-28L-18L	32	32	41	35,5	160
L	28	22	D313-28L-22L	32	36	41	37,5	160
L	35	15	D313-35L-15L	41	27	50	39,5	160
L	35	18	D313-35L-18L	41	32	50	39,5	160
L	35	22	D313-35L-22L	41	36	50	41,5	160
L	35	28	D313-35L-28L	41	41	50	41,5	160
L	42	18	D313-42L-18L	50	32	60	42	160
L	42	22	D313-42L-22L	50	36	60	44	160
L	42	28	D313-42L-28L	50	41	60	44	160
L	42	35	D313-42L-35L	50	50	60	43	160

D313

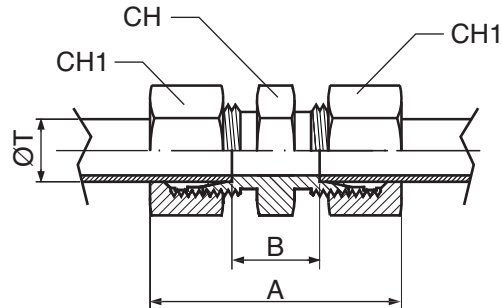
**RACCORDO DIRITTO DI RIDUZIONE
CON DADO GIREVOLE
STRAIGHT END REDUCTION UNION
WITH SWIVEL NUT**



SERIE	T1 Ø	T Ø	CODE	CH mm	CH1 mm	CH2 mm	B mm	Pressure Wp
S	8	6	D313-08S-06S	14	17	19	28	630
S	10	6	D313-10S-06S	17	17	22	29,5	630
S	10	8	D313-10S-08S	17	19	22	29,5	630
S	12	6	D313-12S-06S	17	17	24	30	630
S	12	8	D313-12S-08S	17	19	24	30	630
S	12	10	D313-12S-10S	19	22	24	30,5	630
S	14	6	D313-14S-06S	19	17	27	33	630
S	14	8	D313-14S-08S	19	19	27	33	630
S	14	10	D313-14S-10S	19	22	27	32,5	630
S	14	12	D313-14S-12S	22	24	27	32,5	630
S	16	6	D313-16S-06S	22	17	30	34	400
S	16	8	D313-16S-08S	22	19	30	34	400
S	16	10	D313-16S-10S	22	22	30	33,5	400
S	16	12	D313-16S-12S	22	24	30	33,5	400
S	16	14	D313-16S-14S	24	27	30	35,5	400
S	20	6	D313-20S-06S	27	17	36	39	400
S	20	8	D313-20S-08S	27	19	36	39	400
S	20	10	D313-20S-10S	27	22	36	38,5	400
S	20	12	D313-20S-12S	27	24	36	38,5	400
S	20	14	D313-20S-14S	27	27	36	40	400
S	20	16	D313-20S-16S	27	30	36	39,5	400
S	25	6	D313-25S-06S	32	17	46	41,5	400
S	25	8	D313-25S-08S	32	19	46	41,5	400
S	25	10	D313-25S-10S	32	22	46	41	400
S	25	12	D313-25S-12S	32	24	46	41	400
S	25	14	D313-25S-14S	32	27	46	42,5	400
S	25	16	D313-25S-16S	32	30	46	42	400
S	25	20	D313-25S-20S	32	36	46	42	400
S	30	8	D313-30S-08S	41	19	50	46	400
S	30	10	D313-30S-10S	41	22	50	45,5	400
S	30	12	D313-30S-12S	41	24	50	45,5	400
S	30	14	D313-30S-14S	41	27	50	47	400
S	30	16	D313-30S-16S	41	30	50	46,5	400
S	30	20	D313-30S-20S	41	36	50	46,5	400
S	30	25	D313-30S-25S	41	46	50	47	400
S	38	12	D313-38S-12S	50	24	60	50	315
S	38	14	D313-38S-14S	50	27	60	51,5	315
S	38	16	D313-38S-16S	50	30	60	51	315
S	38	20	D313-38S-20S	50	36	60	51	315
S	38	25	D313-38S-25S	50	46	60	51,5	315
S	38	30	D313-38S-30S	50	50	60	52	315

D314

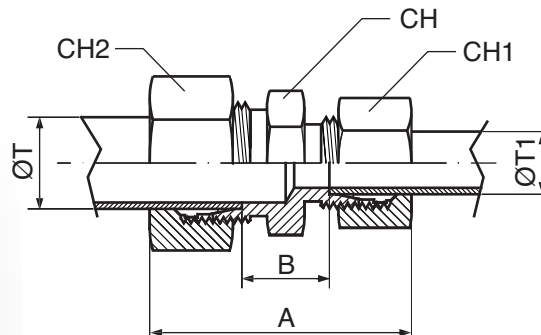
**RACCORDO INTERMEDIO DIRITTO
MASCHIO**
**STRAIGHT END INTERMEDIATE
MALE UNION**



SERIE	T	CODE	CH	CH1	A	B	Pressure
	Ø		mm	mm	mm	mm	Wp
L	6	D314-06L	12	14	39	10	315
L	8	D314-08L	14	17	40	11	315
L	10	D314-10L	17	19	42	13	315
L	12	D314-12L	19	22	43	14	315
L	15	D314-15L	24	27	46	16	315
L	18	D314-18L	27	32	48	16	315
L	22	D314-22L	32	36	52	20	160
L	28	D314-28L	41	41	54	21	160
L	35	D314-35L	46	50	63	20	160
L	42	D314-42L	55	60	66	21	160
S	6	D314-06S	14	17	45	16	630
S	8	D314-08S	17	19	47	18	630
S	10	D314-10S	19	22	49	17	630
S	12	D314-12S	22	24	51	19	630
S	14	D314-14S	24	27	57	22	630
S	16	D314-16S	27	30	57	21	400
S	20	D314-20S	32	36	66	23	400
S	25	D314-25S	41	46	74	26	400
S	30	D314-30S	46	50	80	27	400
S	38	D314-38S	55	60	90	29	315

D315

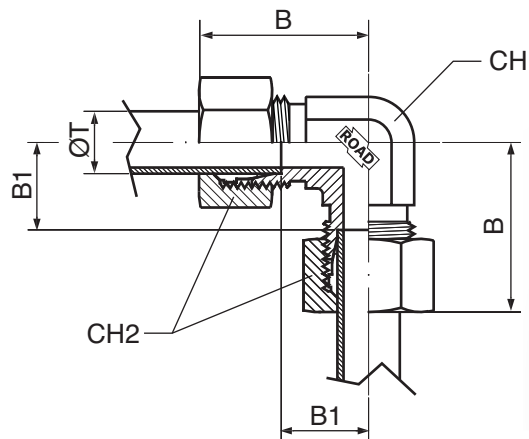
**RACCORDO INTERMEDIO DIRITTO
DI RIDUZIONE**
**STRAIGHT END INTERMEDIATE
REDUCTION UNION**



SERIE	T	T1	CODE	CH	CH1	CH2	A	B	Pressure
	Ø	Ø		mm	mm	mm	mm	mm	Wp
L	8	6	D315-08L-06L	14	14	17	41	11	315
L	10	6	D315-10L-06L	17	14	19	42	12	315
L	10	8	D315-10L-08L	17	17	19	42	12	315
L	12	8	D315-12L-08L	19	17	22	42	13	315
L	12	10	D315-12L-10L	19	19	22	44	14	315
L	15	10	D315-15L-10L	24	19	27	45	15	315
L	15	12	D315-15L-12L	24	22	27	45	15	315
L	18	12	D315-18L-12L	27	22	32	47	15,5	315
L	18	15	D315-18L-15L	27	27	32	48	16,5	315
L	22	15	D315-22L-15L	32	27	36	50	18,5	160
L	22	18	D315-22L-18L	32	32	36	51	18	160
L	28	18	D315-28L-18L	41	32	41	52	19	160
L	28	22	D315-28L-22L	41	36	41	54	21	160
L	35	22	D315-35L-22L	46	36	50	59	21	160
L	35	28	D315-35L-28L	46	41	50	59	21	160
L	42	35	D315-42L-35L	55	50	60	66	21,5	160
S	8	6	D315-08S-06S	17	17	19	48	18	630
S	10	6	D315-10S-06S	19	17	22	49	17,5	630
S	10	8	D315-10S-08S	19	19	22	49	17,5	630
S	12	6	D315-12S-06S	22	17	24	51	19,5	630
S	12	8	D315-12S-08S	22	19	24	51	19,5	630
S	12	10	D315-12S-10S	22	22	24	52	19	630
S	14	10	D315-14S-10S	24	22	27	55	20,5	630
S	14	12	D315-14S-12S	24	24	27	55	20,5	630
S	16	12	D315-16S-12S	27	24	30	55	20	400
S	16	14	D315-16S-14S	27	27	30	58	21,5	400
S	20	12	D315-20S-12S	32	24	36	59,5	22	400
S	20	16	D315-20S-16S	32	30	36	63	23	400
S	25	16	D315-25S-16S	41	30	46	68	25,5	400
S	25	20	D315-25S-20S	41	36	46	71	25,5	400
S	30	20	D315-30S-20S	46	36	50	74	26	400
S	30	25	D315-30S-25S	46	46	50	77	26,5	400
S	38	30	D315-38S-30S	55	50	60	87	29,5	315

D316

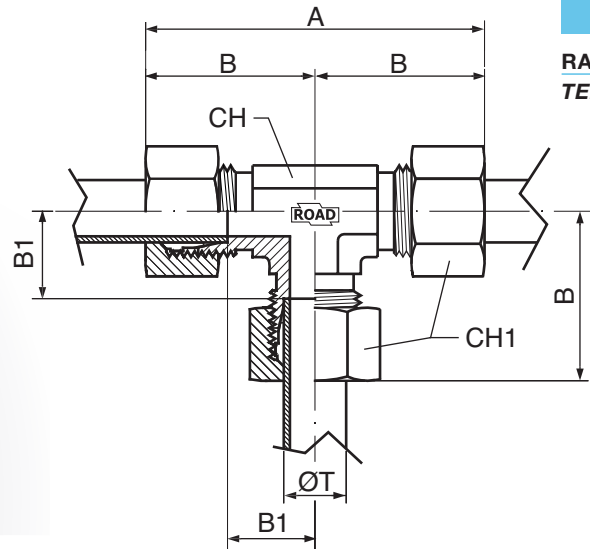
RACCORDO INTERMEDIO A 90°
INTERMEDIATE 90° UNION



SERIE	T	CODE	CH	CH1	B	B1	Pressure
	Ø		mm	mm	mm	mm	Wp
LL	4	D316-04LL	9	10	21	11	100
LL	6	D316-06LL	9	12	21	9,5	100
LL	8	D316-08LL	12	14	23	11,5	100
L	6	D316-06L	12	14	27	12	315
L	8	D316-08L	12	17	29	14	315
L	10	D316-10L	14	19	30	15	315
L	12	D316-12L	17	22	32	17	315
L	15	D316-15L	19	27	36	21	315
L	18	D316-18L	24	32	40	23,5	315
L	22	D316-22L	27	36	44	27,5	160
L	28	D316-28L	36	41	47	30,5	160
L	35	D316-35L	41	50	56	34,5	160
L	42	D316-42L	50	60	63	40	160
S	6	D316-06S	12	17	31	16	630
S	8	D316-08S	14	19	32	17	630
S	10	D316-10S	17	22	34	17,5	630
S	12	D316-12S	17	24	38	21,5	630
S	14	D316-14S	19	27	40	22,0	630
S	16	D316-16S	24	30	43	24,5	400
S	20	D316-20S	27	36	48	26,5	400
S	25	D316-25S	36	46	54	30	400
S	30	D316-30S	41	50	62	35,5	400
S	38	D316-38S	50	60	72	41	315

D317

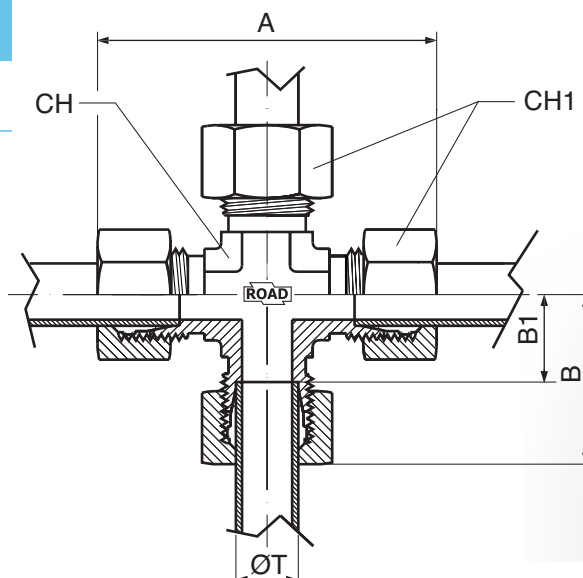
RACCORDO INTERMEDIO A T TEE INTERMEDIATE UNION



SERIE	T	CODE	CH	CH1	A	B	B1	Pressure
	Ø		mm	mm	mm	mm	mm	Wp
LL	4	D317-04LL	9	10	42	21	11	100
LL	6	D317-06LL	9	12	42	21	9,5	100
LL	8	D317-08LL	12	14	46	23	11,5	100
L	6	D317-06L	12	14	54	27	12	315
L	8	D317-08L	12	17	58	29	14	315
L	10	D317-10L	14	19	60	30	15	315
L	12	D317-12L	17	22	64	32	17	315
L	15	D317-15L	19	27	72	36	21	315
L	18	D317-18L	24	32	80	40	23,5	315
L	22	D317-22L	27	36	88	44	27,5	160
L	28	D317-28L	36	41	94	47	30,5	160
L	35	D317-35L	41	50	112	56	34,5	160
L	42	D317-42L	50	60	126	63	40	160
S	6	D317-06S	12	17	62	31	16	630
S	8	D317-08S	14	19	64	32	17	630
S	10	D317-10S	17	22	68	34	17,5	630
S	12	D317-12S	17	24	76	38	21,5	630
S	14	D317-14S	19	27	80	40	22	630
S	16	D317-16S	24	30	86	43	24,5	400
S	20	D317-20S	27	36	96	48	26,5	400
S	25	D317-25S	36	46	108	54	30	400
S	30	D317-30S	41	50	124	62	35,5	400
S	38	D317-38S	50	60	144	72	41	315

D318

**RACCORDO INTERMEDIO A
CROCE**
CROSS INTERMEDIATE UNION

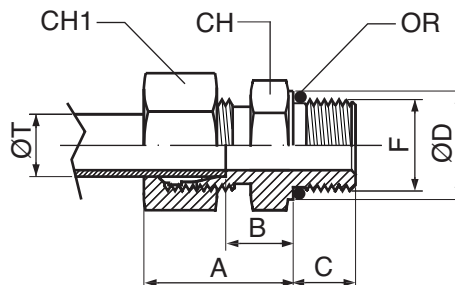


SERIE	T	CODE	CH	CH1	A	B	B1	Pressure
	Ø		mm	mm	mm	mm	mm	Wp
L	6	D318-06L	12	14	54	27	12	315
L	8	D318-08L	14	17	58	29	14	315
L	10	D318-10L	14	19	60	30	15	315
L	12	D318-12L	17	22	64	32	17	315
L	15	D318-15L	19	27	72	36	21	315
L	18	D318-18L	24	32	80	40	23,5	315
L	22	D318-22L	27	36	88	44	27,5	160
L	28	D318-28L	36	41	94	47	30,5	160
L	35	D318-35L	41	50	112	56	34,5	160
L	42	D318-42L	50	60	126	63	40	160
S	6	D318-06S	12	17	62	31	16	630
S	8	D318-08S	14	19	64	32	17	630
S	10	D318-10S	17	22	68	34	17,5	630
S	12	D318-12S	19	24	76	38	21,5	630
S	14	D318-14S	19	27	80	40	22	400
S	16	D318-16S	24	30	86	43	24,5	400
S	20	D318-20S	27	36	96	48	26,5	315
S	25	D318-25S	36	46	108	54	30,0	315
S	30	D318-30S	41	50	124	62	35,5	315
S	38	D318-38S	50	60	144	72	41	315

D319

**RACCORDO DIRITTO CON
FILETTATURA TERMINALE
MASCHIO UNF**

**STRAIGHT END UNION WITH MALE
UNF THREAD**

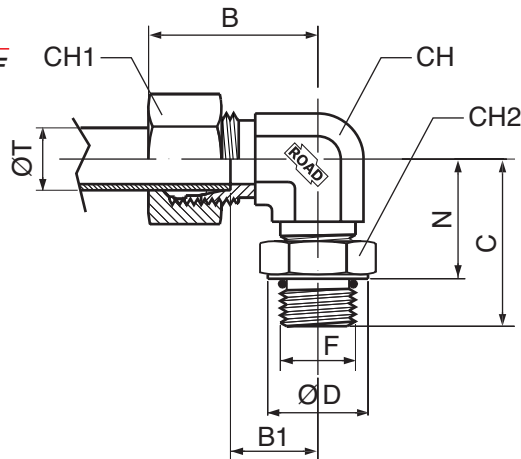


SERIE	T Ø	CODE	F	CH mm	CH1 mm	C mm	A mm	B mm	D mm	Pressure Wp
L	8	D319-08L-11U	7/16-20	17	17	9	28	13	14,4	315
L	10	D319-10L-11U	7/16-20	17	19	9	29	14	14,4	315
L	12	D319-12L-14U	9/16-18	19	22	10	27	12	17,6	315
L	12	D319-12L-19U	3/4-16	24	22	11	28	13	22,3	315
L	12	D319-12L-22U	7/8-14	27	22	13	29	14	25,5	315
L	15	D319-15L-19U	3/4-16	24	27	11	29	14	22,3	315
L	15	D319-15L-22U	7/8-14	27	27	13	30,5	15,5	25,5	315
L	18	D319-18L-19U	3/4-16	27	32	11	29,5	14,5	22,3	315
L	18	D319-18L-22U	7/8-14	27	32	13	29,5	14,5	25,5	315
L	22	D319-22L-22U	7/8-14	32	36	13	33	16,5	25,5	160
L	22	D319-22L-27U	1 1/16-12	32	36	15	33	16,5	31,9	160
L	22	D319-22L-33U	1 5/16-12	41	36	15	34	17,5	38,2	160
L	28	D319-28L-27U	1 1/16-12	41	41	15	34	17,5	31,9	160
L	28	D319-28L-33U	1 5/16-12	41	41	15	34	17,5	38,2	160
L	35	D319-35L-33U	1 5/16-12	46	50	15	39	17,5	38,2	160
L	35	D319-35L-41U	1 5/8-12	50	50	15	39	17,5	47,7	160
L	42	D319-42L-41U	1 5/8-12	55	60	15	42	19	54	160
S	8	D319-08S-11U	7/16-20	17	19	9	30	15	14,4	630
S	10	D319-10S-14U	9/16-18	19	22	10	31	14,5	17,6	630
S	12	D319-12S-14U	9/16-18	22	24	10	31	14,5	17,6	630
S	12	D319-12S-19U	3/4-16	24	24	11	34	17,5	22,3	630
S	16	D319-16S-19U	3/4-16	24	30	11	34	15,5	22,3	400
S	16	D319-16S-22U	7/8-14	27	30	13	37	18,5	25,5	400
S	20	D319-20S-19U	3/4-16	32	36	11	42	20,5	22,3	400
S	20	D319-20S-22U	7/8-14	32	36	13	42	20,5	25,5	400
S	20	D319-20S-27U	1 1/16-12	32	36	15	42	20,5	31,9	400
S	25	D319-25S-27U	1 1/16-12	41	46	15	47	23	31,9	400
S	25	D319-25S-33U	1 5/16-12	41	46	15	47	23	38,2	400
S	30	D319-30S-33U	1 5/16-12	46	50	15	50	23,5	38,2	400
S	30	D319-30S-42U	1 5/8-12	50	50	15	50	23,5	47,7	400
S	38	D319-38S-42U	1 5/8-12	55	60	15	42	19	54	315

D320

**RACCORDO DI ESTREMITA' A 90°
ORIENTABILE CON FILETTATURA
UNF**

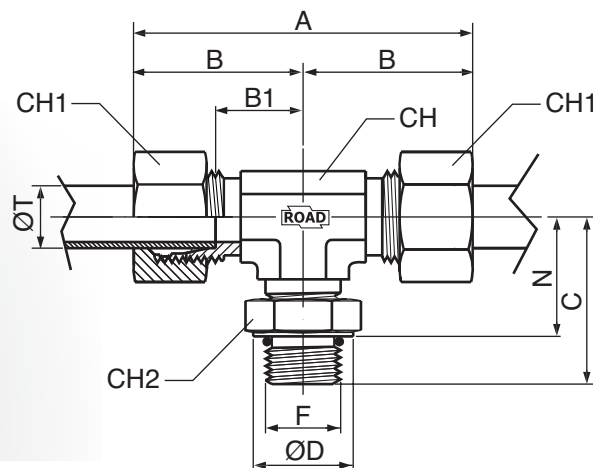
**90° ADJUSTABLE UNION WITH UNF
THREAD**



SERIE	T	CODE	F	CH	CH1	CH2	C	N	B	B1	D	Pressure
	Ø			mm	mm	mm	mm	mm ±1	mm	mm	Ø	Wp
L	6	D320-06L-11U	7/16-20	14	14	14	29	19	29	14	16,6	315
L	8	D320-08L-11U	7/16-20	14	17	14	29	19	31	16	16,6	315
L	10	D320-10L-14U	9/16-18	19	19	17	34	22	32	17	19,8	315
L	12	D320-12L-14U	9/16-18	19	22	17	36	24	34	19	19,8	315
L	12	D320-12L-19U	3/4-16	19	22	22	37,5	26	34	19	26,9	315
L	15	D320-15L-19U	3/4-16	22	27	22	41	30	36	21	26,9	315
L	15	D320-15L-22U	7/8-14	22	27	27	43	30	36	21	29,2	315
L	18	D320-18L-22U	7/8-14	27	32	27	47	34	40	24	29,2	315
L	18	D320-18L-27U	1 1/16-12	33	32	32	50	36	40,5	24,5	34,7	315
L	22	D320-22L-27U	1 1/16-12	33	36	32	52	36	44	28	34,7	160
L	28	D320-28L-33U	1 5/16-12	41	41	41	57	40	47	31	43,6	160
L	35	D320-35L-42U	1 5/8-12	48	50	50	63	46	59	38	52,7	160
L	42	D320-42L-48U	1 7/8-12	48	60	55	64	47	61	38	57,7	160
S	6	D320-06S-11U	7/16-20	14	17	14	32	20	30,5	15,5	16,6	400
S	8	D320-08S-14U	9/16-18	19	19	17	37	26	33,5	18	19,8	400
S	10	D320-10S-14U	9/16-18	19	22	17	37,5	27	34	18	19,8	400
S	12	D320-12S-19U	3/4-16	22	24	22	44	28	38	22	26,9	400
S	16	D320-16S-22U	7/8-14	27	30	27	50	35	43	25	29,2	400
S	20	D320-20S-27U	1 1/16-12	33	36	32	53	36	49	28	34,7	400
S	25	D320-25S-27U	1 1/16-12	41	46	32	57	40	54,5	30,5	34,7	400
S	30	D320-30S-42U	1 5/8-12	48	50	50	69	52	62	36	52,75	250
S	38	D320-38S-48U	1 7/8-12	48	60	55	69	52	65	34	57,7	250

D321

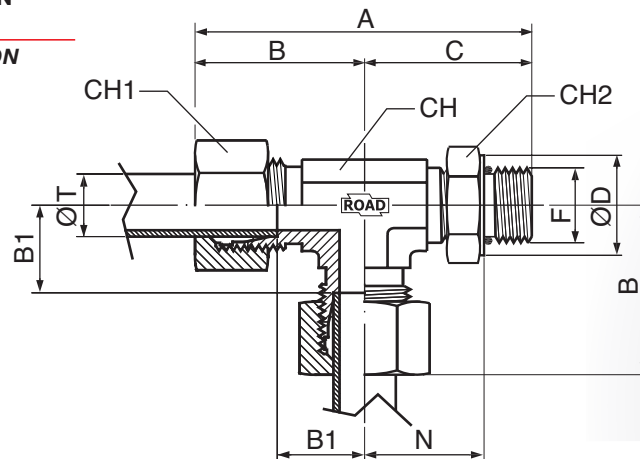
**RACCORDO A T ORIENTABILE
CENTRALE CON FILETTATURA UNF
BRANCH TEE ADJUSTABLE UNION
WITH UNF THREAD**



SERIE	T	CODE	F	CH	CH1	CH2	C	N	A	B	B1	D	Pressure
	Ø			mm	mm	mm	mm	mm ±1	mm	mm	mm	Ø	Wp
L	6	D321-06L-11U	7/16-20	14	14	14	29	19	58	29	14	16,6	250
L	8	D321-08L-11U	7/16-20	14	17	14	29	19	62	31	16	16,6	250
L	10	D321-10L-14U	9/16-18	19	19	17	34	22	64	32	17	19,8	250
L	12	D321-12L-14U	9/16-18	19	22	17	36	24	68	34	19	19,8	250
L	12	D321-12L-19U	3/4-16	19	22	22	37,5	26	68	34	19	26,9	250
L	15	D321-15L-19U	3/4-16	22	27	22	41	30	72	36	21	26,9	250
L	15	D321-15L-22U	7/8-14	22	27	27	43	30	72	36	21	29,2	250
L	18	D321-18L-22U	7/8-14	27	32	27	47	34	80	40	24	29,2	250
L	18	D321-18L-27U	1 1/16-12	33	32	32	50	36	81	40,5	24,5	34,7	250
L	22	D321-22L-27U	1 1/16-12	33	36	32	52	36	88	44	28	34,7	160
L	28	D321-28L-33U	1 5/16-12	41	41	41	57	40	94	47	31	43,6	160
L	35	D321-35L-42U	1 5/8-12	48	50	50	63	46	118	59	38	52,7	160
L	42	D321-42L-48U	1 7/8-12	48	60	55	64	47	122	61	38	57,7	160
S	6	D321-06S-11U	7/16-20	14	17	14	32	20	61	30,5	15,5	16,6	400
S	8	D321-08S-14U	9/16-18	19	19	17	37	26	67	33,5	18	16,6	400
S	10	D321-10S-14U	9/16-18	19	22	17	37,5	27	68	34	18,0	19,8	400
S	12	D321-12S-19U	3/4-16	22	24	22	44	28	76	38	22	26,9	400
S	16	D321-16S-22U	7/8-14	27	30	27	50	35	86	43	25	29,2	400
S	20	D321-20S-27U	1 1/16-12	33	36	32	53	36	98	49	28	34,7	400
S	25	D321-25S-27U	1 1/16-12	41	46	32	57	40	109	54,5	30,5	34,7	400
S	30	D321-30S-42U	1 5/8-12	48	50	50	69	52	124	62	36	52,7	250
S	38	D321-38S-48U	1 7/8-12	48	60	55	69	52	130	65	34	57,7	250

D322

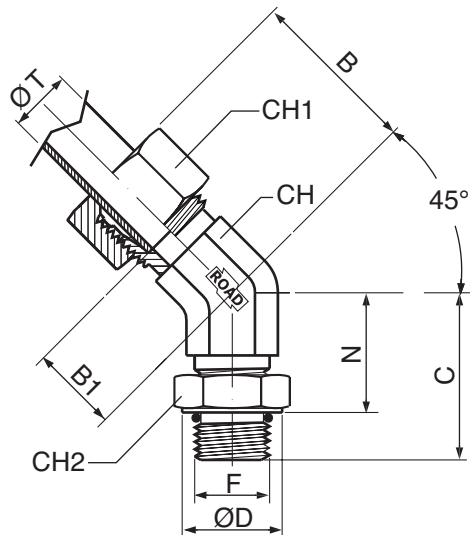
**RACCORDO DI ESTREMITA' A T
ORIENTABILE LATERALE CON
FILETTATURA UNF**
**RUN TEE ADJUSTABLE UNION
WITH UNF THREAD**



SERIE	T	CODE	F	CH	CH1	CH2	C	N	A	B	B1	D	Pressure
	Ø			mm	mm	mm	mm	mm ±1	mm	mm	mm	Ø	Wp
L	6	D322-06L-11U	7/16-20	14	14	14	29	19	58	29	14	16,6	315
L	8	D322-08L-11U	7/16-20	14	17	14	29	19	60	31	16	16,6	315
L	10	D322-10L-14U	9/16-18	19	19	17	34	22	66	32	17	19,8	315
L	12	D322-12L-14U	9/16-18	19	22	17	36	24	70	34	19	19,8	315
L	12	D322-12L-19U	3/4-16	19	22	22	37,5	26	71,5	34	19	26,9	315
L	15	D322-15L-19U	3/4-16	22	27	22	41	30	77	36	21	26,9	315
L	15	D322-15L-22U	7/8-14	22	27	27	43	30	79	36	21	29,2	315
L	18	D322-18L-22U	7/8-14	27	32	27	47	34	87	40	24	29,2	315
L	18	D322-18L-27U	1 1/16-12	33	32	32	50	36	90,5	40,5	24,5	34,7	315
L	22	D322-22L-27U	1 1/16-12	33	36	32	52	36	96	44	28	34,7	160
L	28	D322-28L-33U	1 5/16-12	41	41	41	57	40	104	47	31	43,6	160
L	35	D322-35L-42U	1 5/8-12	48	50	50	63	46	122	59	38	52,7	160
L	42	D322-42L-48U	1 7/8-12	48	60	55	64	47	125	61	38	57,7	160
S	6	D322-06S-11U	7/16-20	14	17	14	32	20	62,5	30,5	15,5	16,6	400
S	8	D322-08S-14U	9/16-18	19	19	17	37	26	70,5	33,5	18	19,8	400
S	10	D322-10S-14U	9/16-18	19	22	17	37,5	27	71,5	34	18	19,8	400
S	12	D322-12S-19U	3/4-16	22	24	22	44	28	82	38	22	26,9	400
S	16	D322-16S-22U	7/8-14	27	30	27	50	35	93	43	25	29,2	400
S	20	D322-20S-27U	1 1/16-12	33	36	32	53	36	102	49	28	34,7	400
S	25	D322-25S-27U	1 1/16-12	41	46	32	57	40	111,5	54,5	30,5	34,7	400
S	30	D322-30S-42U	1 5/8-12	48	50	50	69	52	131	62	36	52,7	250
S	38	D322-38S-48U	1 7/8-12	48	60	55	69	52	134	65	34	57,7	250

D323

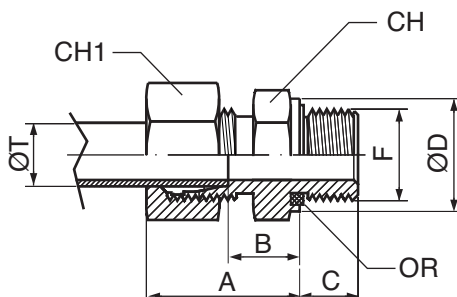
**RACCORDO A 45° ORIENTABILE
CON FILETTATURA UNF
45° ADJUSTABLE UNION WITH UNF
THREAD**



SERIE	T	CODE	F	CH	CH1	CH2	C	N	B	B1	D	Pressure
	Ø			mm	mm	mm	mm	mm ±1	mm	mm	Ø	Wp
L	6	D323-06L-11U	7/16-20	14	14	14	29	19	24,5	9,5	16,6	315
L	8	D323-08L-11U	7/16-20	14	17	14	29	19	27	12	16,6	315
L	10	D323-10L-14U	9/16-18	19	19	17	34	22	27	12	19,8	315
L	12	D323-12L-14U	9/16-18	19	22	17	36	24	29	14	19,8	315
L	12	D323-12L-19U	3/4-16	19	22	22	37	26	29	14	26,9	315
L	15	D323-15L-19U	3/4-16	22	27	22	37	30	32	17	26,9	315
L	15	D323-15L-22U	7/8-14	22	27	27	35	30	32	17	29,2	315
L	18	D323-18L-22U	7/8-14	27	32	27	45	34	33	17	29,2	315
L	18	D323-18L-27U	1 1/16-12	33	32	32	47,5	36	34	18	34,7	315
L	22	D323-22L-27U	1 1/16-12	33	36	32	50	36	35,5	19,5	34,7	160
L	28	D323-28L-33U	1 5/16-12	41	41	41	52	38	39	23	43,6	160
L	35	D323-35L-42U	1 5/8-12	48	50	50	54	40	48	27	52,7	160
L	42	D323-42L-48U	1 7/8-12	48	60	55	54	40	49	26	57,7	160
S	6	D323-06S-11U	7/16-20	14	17	14	30	20	26	11	16,6	400
S	8	D323-08S-14U	9/16-18	19	19	17	33	23	28	13	19,8	400
S	10	D323-10S-14U	9/16-18	19	22	17	33	26	29	13	19,8	400
S	12	D323-12S-19U	3/4-16	22	24	22	36	28	33	17	26,9	400
S	16	D323-16S-22U	7/8-14	27	30	27	45	32	34	16	29,2	400
S	20	D323-20S-27U	1 1/16-12	33	36	32	50	34	40	19	34,7	400
S	25	D323-25S-27U	1 1/16-12	41	46	32	52	40	46	22	34,7	400
S	30	D323-30S-42U	1 5/8-12	48	50	50	54	40	50	24	52,7	250
S	38	D323-38S-48U	1 7/8-12	48	60	55	54	40	55	24	57,7	250

D324

**RACCORDO DIRITTO CON
FILETTATURA TERMINALE BSPP
STRAIGHT END UNION WITH BSPP
THREAD**

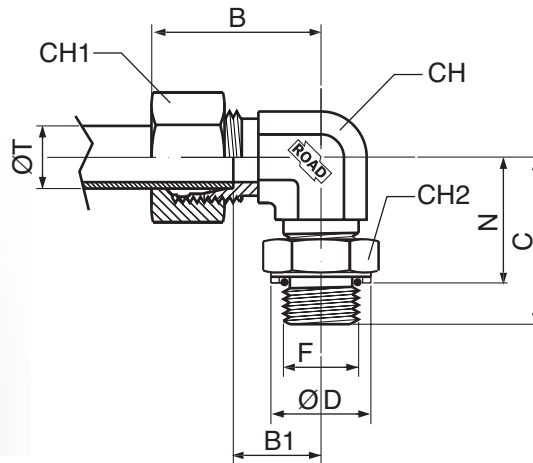


SERIE	T Ø	CODE	F	CH mm	CH1 mm	C mm	A mm	B mm	D Ø	Pressure Wp
L	6	D324-06L-10G	1/8-28	14	14	8	23	8,5	14	315
L	6	D324-06L-13G	1/4-19	19	14	12	25	10	18,7	315
L	8	D324-08L-13G	1/4-19	19	17	12	25	10	18,7	315
L	8	D324-08L-10G	1/8-28	14	17	8	24,5	9,5	14	315
L	8	D324-08L-17G	3/8-19	22	17	12	26,5	11,5	22	315
L	10	D324-10L-13G	1/4-19	19	19	12	26	11	18,7	315
L	10	D324-10L-17G	3/8-19	22	19	12	27,5	12,5	22	315
L	10	D324-10L-21G	1/2-14	27	19	14	28	13	26,7	315
L	12	D324-12L-17G	3/8-19	22	22	12	27,5	12,5	22	315
L	12	D324-12L-13G	1/4-19	19	22	12	27,5	12,5	18,7	315
L	12	D324-12L-21G	1/2-14	27	22	14	27,5	13	26,7	315
L	15	D324-15L-21G	1/2-14	27	27	14	29	14	26,7	315
L	15	D324-15L-17G	3/8-19	24	27	12	28,5	13,5	22	315
L	18	D324-18L-21G	1/2-14	27	32	14	31	14,5	26,7	315
L	18	D324-18L-26G	3/4-14	32	32	16	31	14,5	32	315
L	22	D324-22L-26G	3/4-14	32	36	16	33	16,5	32	160
L	28	D324-28L-33G	1-11	41	41	18	34	17,5	39,7	160
L	35	D324-35L-42G	1 1/4-11	50	50	20	39	17,5	49,7	160
L	42	D324-42L-48G	1 1/2-11	55	60	22	42	19	55	160
S	6	D324-06S-13G	1/4-19	19	17	12	28	13	18,7	630
S	8	D324-08S-13G	1/4-19	19	19	12	30	15	18,7	630
S	8	D324-08S-17G	3/8-19	22	19	12	30,5	15,5	22	630
S	10	D324-10S-17G	3/8-19	22	22	12	31	15	22	630
S	10	D324-10S-13G	1/4-19	22	22	12	30,5	14,5	18,7	630
S	10	D324-10S-21G	1/2-14	27	22	14	33,5	17,5	26,7	630
S	12	D324-12S-17G	3/8-19	22	24	12	33	17	22	630
S	12	D324-12S-13G	1/4-19	22	24	12	32,5	16,5	19	630
S	12	D324-12S-21G	1/2-14	27	24	14	33,5	17,5	27	630
S	14	D324-14S-21G	1/2-14	27	27	14	37	19	26,7	630
S	16	D324-16S-21G	1/2-14	27	30	14	37	18,5	26,7	400
S	16	D324-16S-17G	3/8-19	27	30	12	36,5	18	22	400
S	16	D324-16S-26G	3/4-14	32	30	16	39	20,5	32	400
S	20	D324-20S-26G	3/4-14	32	36	16	42	20,5	32	400
S	25	D324-25S-33G	1-11	41	46	18	47	23	39,7	400
S	25	D324-25S-26G	3/4-14	41	46	16	47	23	32	400
S	30	D324-30S-42G	1 1/4-11	50	50	20	50	23,5	49,7	400
S	38	D324-38S-48G	1 1/2-11	55	60	22	57	26	55	315

D325

**RACCORDO A 90° ORIENTABILE
CON FILETTATURA TERMINALE
BSPP**

**90° ADJUSTABLE UNION WITH
BSPP THREAD**

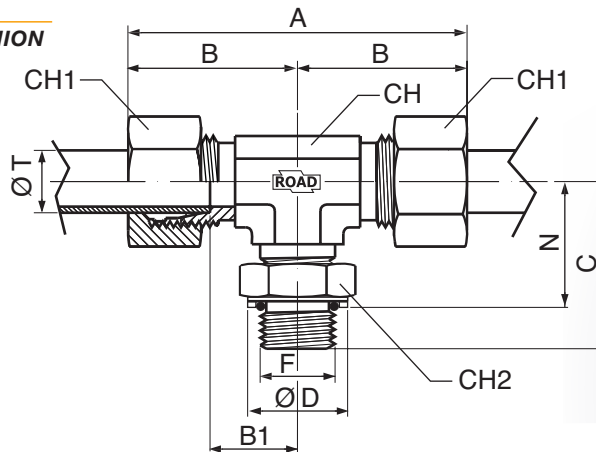


SERIE	T	CODE	F	CH	CH1	CH2	C	N	B	B1	D	Pressure
	Ø			mm	mm	mm	mm	mm ±1	mm	mm	Ø	Wp
L	6	D325-06L-10G	1/8-28	14	14	14	26,5	22	29	14	16	315
L	8	D325-08L-13G	1/4-19	14	17	19	32	22,5	31	16	19	315
L	10	D325-10L-13G	1/4-19	19	19	19	34	26	32	17	19	315
L	12	D325-12L-17G	3/8-19	19	22	22	37	28,5	34	19	23	250
L	15	D325-15L-21G	1/2-14	22	27	27	43	33	36	21	28,5	250
L	18	D325-18L-21G	1/2-14	27	32	27	49,5	36	40	24	28,5	250
L	22	D325-22L-26G	3/4-14	30	36	36	50,5	38	44	28	34,5	160
L	28	D325-28L-33G	1-11	36	41	41	57	41	47	31	44,5	160
L	35	D325-35L-42G	1 1/4-11	48	50	50	65	49	59	38	53	160
L	42	D325-42L-48G	1 1/2-11	48	60	55	67	52	61	38	58	160
S	6	D325-06S-13G	1/4-19	14	17	19	32	22,5	30,5	15,5	19	315
S	8	D325-08S-13G	1/4-19	19	19	19	36	26	33	18	19	315
S	10	D325-10S-17G	3/8-19	19	22	22	38	28,5	34	18	23	250
S	12	D325-12S-17G	3/8-19	22	24	22	38	28,5	38	22	23	250
S	16	D325-16S-21G	1/2-14	27	30	27	49	36	43	25	28,5	250
S	20	D325-20S-26G	3/4-14	30	36	36	51	38	49	28	34,5	250
S	25	D325-25S-33G	1-11	36	46	41	57	41	54,5	30,5	44,5	250
S	30	D325-30S-42G	1 1/4-11	48	50	50	64	49	62	36	53	160
S	38	D325-38S-48G	1 1/2-11	48	60	55	69	52	65	34	58	160

D326

**RACCORDO A T ORIENTABILE
CENTRALE CON FILETTATURA
BSPP**

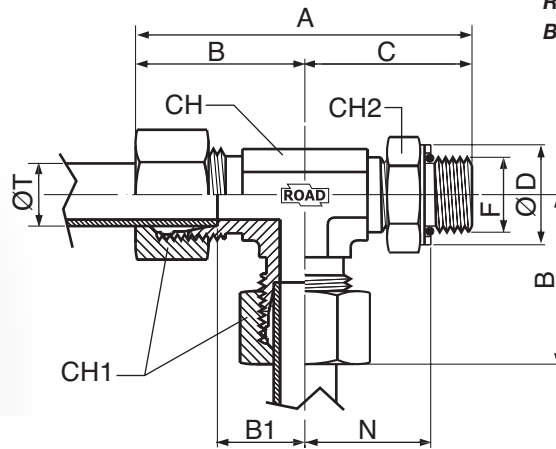
**BRANCH TEE ADJUSTABLE UNION
WITH BSPP THREAD**



SERIE	T	CODE	F	CH	CH1	CH2	C	N	A	B	B1	D	Pressure
	Ø			mm	mm	mm	mm	mm ±1	mm	mm	mm	Ø	Wp
L	6	D326-06L-10G	1/8-28	14	14	14	28	22	58	29	14	16	315
L	8	D326-08L-13G	1/4-19	14	17	19	34	22,5	62	31	16	19	315
L	10	D326-10L-13G	1/4-19	19	19	19	34	26	64	32	17	19	315
L	12	D326-12L-17G	3/8-19	19	22	22	37	28,5	68	34	19	23	250
L	15	D326-15L-21G	1/2-14	22	27	27	43	33	72	36	21	28,5	250
L	18	D326-18L-21G	1/2-14	27	32	27	49,5	36	80	40	24	28,5	250
L	22	D326-22L-26G	3/4-14	30	36	36	52	38	88	44	28	34,5	160
L	28	D326-28L-33G	1-11	36	41	41	57	41	94	47	31	44,5	160
L	35	D326-35L-42G	1 1/4-11	48	50	50	65	49	118	59	38	53	160
L	42	D326-42L-48G	1 1/2-11	48	60	55	67	52	122	61	38	58	160
S	6	D326-06S-13G	1/4-19	14	17	19	32	22,5	61	30,5	15,5	19	315
S	8	D326-08S-13G	1/4-19	19	19	19	36	26	66	33	18	19	315
S	10	D326-10S-17G	3/8-19	19	22	22	38	28,5	68	34	18	23	250
S	12	D326-12S-17G	3/8-19	22	24	22	38	28,5	76	38	22	23	250
S	16	D326-16S-21G	1/2-14	27	30	27	49	36	86	43	25	28,5	250
S	20	D326-20S-26G	3/4-14	30	36	36	51	38	98	49	28	34,5	250
S	25	D326-25S-33G	1-11	36	46	41	57	41	109	54,5	30,5	44,5	250
S	30	D326-30S-42G	1 1/4-11	48	50	50	64	49	124	62	36	53	160
S	38	D326-38S-48G	1 1/2-11	48	60	55	69	52	130	65	34	58	160

D327

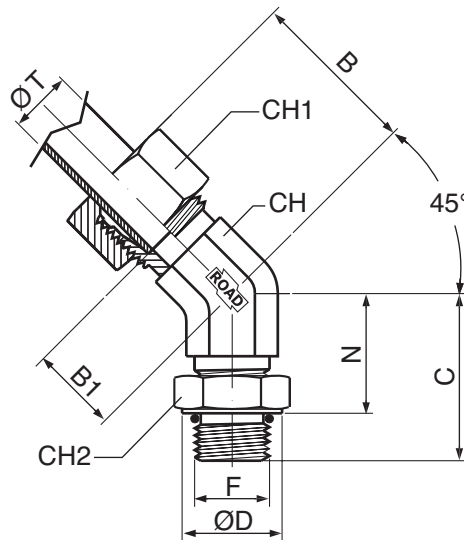
**RACCORDO A T ORIENTABILE
LATERALE CON FILETTATURA BSPP
RUN TEE ADJUSTABLE UNION WITH
BSPP THREAD**



SERIE	T	CODE	F	CH	CH1	CH2	C	N	A	B	B1	D	Pressure
	Ø			mm	mm	mm	mm	mm ±1	mm	mm	mm	Ø	Wp
L	6	D327-06-10L	1/8-28	14	14	14	26,5	22	55,5	29	14	16	315
L	8	D327-08-13L	1/4-19	14	17	19	32	22,5	63	31	16	19	315
L	10	D327-10-13L	1/4-19	19	19	19	34	26	66	32	17	19	315
L	12	D327-12-17L	3/8-19	19	22	22	37	28,5	71	34	19	23	250
L	15	D327-15-21L	1/2-14	22	27	27	43	33	79	36	21	28,5	250
L	18	D327-18-21L	1/2-14	27	32	27	49,5	36	89,5	40	24	28,5	250
L	22	D327-22-26L	3/4-14	30	36	36	50,5	38	94,5	44	28	34,5	160
L	28	D327-28-33L	1-11	36	41	41	57	41	104	47	31	44,5	160
L	35	D327-35-42L	1 1/4-11	48	50	50	65	49	124	59	38	53	160
L	42	D327-42-48L	1 1/2-11	48	60	55	67	52	128	61	38	58	160
S	6	D327-06-13S	1/4-19	14	17	19	32	22,5	62,5	30,5	15,5	19	315
S	8	D327-08-13S	1/4-19	19	19	19	36	26	69	33	18	19	315
S	10	D327-10-17S	3/8-19	19	22	22	38	28,5	72	34	18	23	250
S	12	D327-12-17S	3/8-19	22	24	22	38	28,5	76	38	22	23	250
S	16	D327-16-21S	1/2-14	27	30	27	49	36	92	43	25	28,5	250
S	20	D327-20-26S	3/4-14	30	36	36	51	38	100	49	28	34,5	250
S	25	D327-25-33S	1-11	36	46	41	57	41	111,5	54,5	30,5	44,5	250
S	30	D327-30-42S	1 1/4-11	48	50	50	64	49	126	62	36	53	160
S	38	D327-38-48S	1 1/2-11	48	60	55	69	52	134	65	34	58	160

D328

**RACCORDO A 45°
ORIENTABILE BSPP
45° ADJUSTABLE UNION WITH
BSPP THREAD**

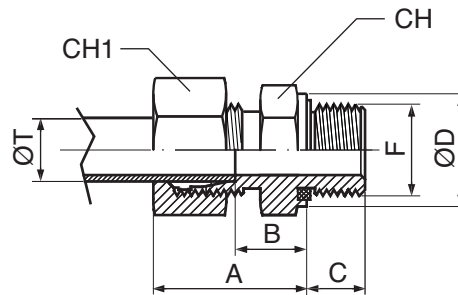


SERIE	T	CODE	F	CH	CH1	CH2	C	N	B	B1	D	Pressure
	Ø			mm	mm	mm	mm	mm ±1	mm	mm	Ø	Wp
L	6	D328-06L-10G	1/8-28	14	14	14	28	19	24,5	9,5	16	315
L	8	D328-08L-13G	1/4-19	14	17	19	29	19	27	12	19	315
L	10	D328-10L-13G	1/4-19	19	19	19	34	22	27	12	19	315
L	12	D328-12L-17G	3/8-19	19	22	22	37	24	29	14	23	250
L	15	D328-15L-21G	1/2-14	22	27	27	39	30	32	17	28,5	250
L	18	D328-18L-21G	1/2-14	27	32	27	45	34	33	17	28,5	250
L	22	D328-22L-26G	3/4-14	33	36	36	50,5	36	35,5	19,5	34,5	160
L	28	D328-28L-33G	1-11	41	41	41	52	38	39	23	44,5	160
L	35	D328-35L-42G	1 1/4-11	48	50	50	54	40	48	27	53	160
L	42	D328-42L-48G	1 1/2-11	48	60	55	54	40	49	26	58	160
S	6	D328-06S-13G	1/4-19	14	17	19	28	20	26	11	19	315
S	8	D328-08S-13G	1/4-19	19	19	19	32	23	28	13	19	315
S	10	D328-10S-17G	3/8-19	19	22	22	34	26	29	13	23	250
S	12	D328-12S-17G	3/8-19	22	24	22	34	28	33	17	23	250
S	16	D328-16S-21G	1/2-14	27	30	27	44	32	34	16	28,5	250
S	20	D328-20S-26G	3/4-14	33	36	36	46	34	40	19	34,5	250
S	25	D328-25S-33G	1-11	41	46	41	51	40	46	22	44,5	250
S	30	D328-30S-42G	1 1/4-11	48	50	50	53	40	50	24	53	160
S	38	D328-38S-48G	1 1/2-11	48	60	55	53	40	55	24	58	160

D329

**RACCORDO DIRITTO CON
FILETTATURA TERMINALE
MASCHIO METRICO CILINDRICO
DIN 3852-1**

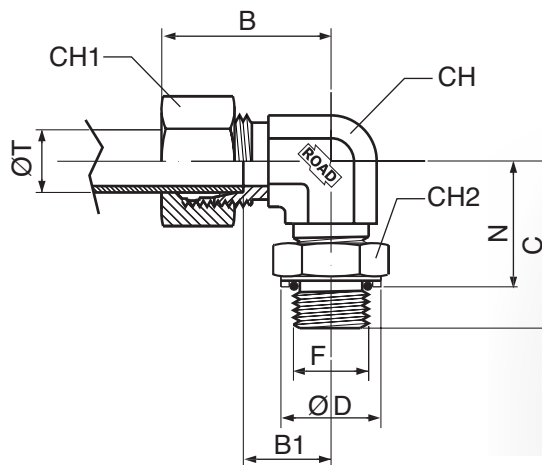
**STRAIGHT END UNION WITH
METRIC CYLINDRICAL THREAD
DIN 3852-1**



SERIE	T	CODE	F	CH	CH1	C	A	D	B	Pressure
	Ø			mm	mm	mm	mm	Ø	mm	Wp
L	6	D329-06L-10M	M10x1	14	14	8	23	14	8,5	315
L	8	D329-08L-12M	M12x1,5	17	17	12	25	17	10	315
L	10	D329-10L-14M	M14x1,5	19	19	12	26	19	11	315
L	10	D329-10L-16M	M16x1,5	22	19	12	27,5	21,7	12,5	315
L	10	D329-10L-18M	M18x1,5	24	19	12	27,5	23,7	12,5	315
L	12	D329-12L-16M	M16x1,5	22	22	12	27	21,7	12,5	315
L	12	D329-12L-18M	M18x1,5	24	22	12	33	23,7	14,5	315
L	12	D329-12L-22M	M22x1,5	27	22	14	28,5	27	16,5	315
L	15	D329-15L-18M	M18x1,5	24	27	12	29	23,7	13,5	315
L	15	D329-15L-22M	M22x1,5	27	27	14	31	27	14,5	315
L	18	D329-18L-22M	M22x1,5	27	32	14	31	27	14,5	315
L	22	D329-22L-26M	M26x1,5	32	36	16	33	31,7	16,5	160
L	28	D329-28L-33M	M33x2	41	41	18	34	39,7	17,5	160
L	35	D329-35L-42M	M42x2	50	50	20	39	49,7	17,5	160
L	42	D329-42L-48M	M48x2	55	60	22	42	55	19	160
S	6	D329-06S-12M	M12x1,5	17	17	12	28	17	13	630
S	8	D329-08S-14M	M14x1,5	19	19	12	30	19	15	630
S	10	D329-10S-16M	M16x1,5	22	22	12	31	21,7	15	630
S	12	D329-12S-18M	M18x1,5	24	24	12	33	23,7	17	630
S	14	D329-14S-20M	M20x1,5	27	27	14	37	25,7	19	630
S	16	D329-16S-22M	M22x1,5	27	30	14	37	27	18,5	400
S	20	D329-20S-27M	M27x2	32	36	16	42	32	20,5	400
S	25	D329-25S-33M	M33x2	41	46	18	47	39,7	23	400
S	30	D329-30S-42M	M42x2	50	50	20	50	49,7	23,5	400
S	38	D329-38S-48M	M48x2	55	60	22	57	55	26	315

D330

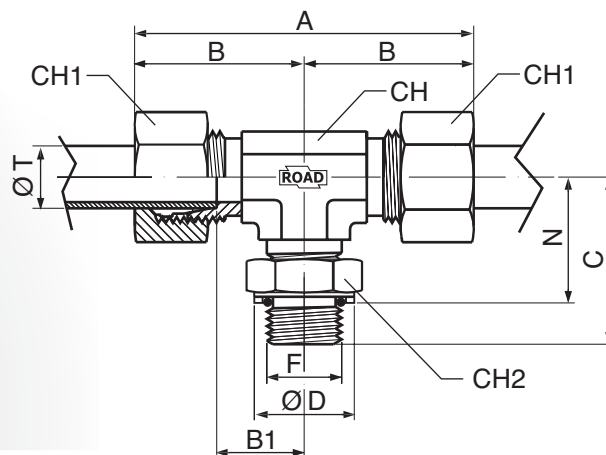
**RACCORDO A 90° ORIENTABILE
CON FILETTATURA METRICA
CILINDRICA DIN 3852-1**
**90° ADJUSTABLE UNION WITH
METRIC CYLINDRICAL THREAD
DIN 3852-1**



SERIE	T	CODE	F	CH	CH1	CH2	C	N	B	B1	D	Pressure
	Ø			mm	mm	mm	mm	mm ±1	mm	mm	Ø	Wp
L	6	D330-06L-10M	M10x1	14	14	14	27,5	22	29	14	16	315
L	8	D330-08L-12M	M12x1,5	14	17	17	32	22,5	31	16	18	315
L	10	D330-10L-14M	M14x1,5	19	19	19	35	26	32	17	19	315
L	12	D330-12L-16M	M16x1,5	19	22	22	36	28,5	34	19	22,9	315
L	15	D330-15L-18M	M18x1,5	22	27	24	41	31	36	21	26,3	315
L	18	D330-18L-22M	M22x1,5	27	32	27	45	36	40	24	28,3	250
L	22	D330-22L-27M	M27x2	30	36	32	49,5	38	44	28	34,5	160
L	28	D330-28L-33M	M33x2	36	41	41	54	41	47	31	44,5	160
L	35	D330-35L-42M	M42x2	48	50	50	62	49	59	38	53	160
L	42	D330-42L-48M	M48x2	48	60	55	65	52	61	38	58	160
S	6	D330-06S-12M	M12x1,5	14	17	17	33	22,5	30,5	15,5	18	315
S	8	D330-08S-14M	M14x1,5	19	19	19	36	26	33	18	19	315
S	10	D330-10S-16M	M16x1,5	19	22	22	38	28,5	34	18	22,9	315
S	12	D330-12S-18M	M18x1,5	22	24	24	43	29,5	38	22	26,3	315
S	16	D330-16S-22M	M22x1,5	27	30	27	50	36	43	25	28,3	250
S	20	D330-20S-27M	M27x2	30	36	32	53,5	38	49	28	34,5	250
S	25	D330-25S-33M	M33x2	36	46	41	57	41	54,5	30,5	44,5	160
S	30	D330-30S-42M	M42x2	48	50	50	68	49	63	36	53	160
S	38	D330-38S-48M	M48x2	48	60	55	69	52	65	34	58	160

D331

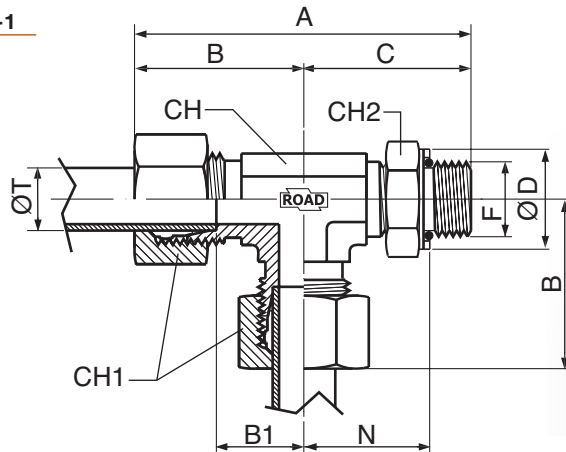
**RACCORDO A T ORIENTABILE
CENTRALE CON FILETTATURA
METRICO CILINDRICA DIN 3852-1
BRANCH TEE ADJUSTABLE UNION
WITH METRIC CYLINDRICAL
THREAD DIN 3852-1**



SERIE	T	CODE	F	CH	CH1	CH2	C	N	A	B	B1	D	Pressure
	Ø			mm	mm	mm	mm	mm ±1	mm	mm	mm	Ø	Wp
L	6	D331-06L-10M	M10x1	14	14	14	27,5	22	58	29	14	16	315
L	8	D331-08L-12M	M12x1,5	14	17	17	32	22,5	62	31	16	18	315
L	10	D331-10L-14M	M14x1,5	19	19	19	35	26	64	32	17	19	315
L	12	D331-12L-16M	M16x1,5	19	22	22	36	28,5	68	34	19	22,9	315
L	15	D331-15L-18M	M18x1,5	22	27	24	41	31	72	36	21	26,3	315
L	18	D331-18L-22M	M22x1,5	27	32	27	45	36	80	40	24	28,3	250
L	22	D331-22L-27M	M27x2	30	36	32	49,5	38	88	44	28	34,5	160
L	28	D331-28L-33M	M33x2	36	41	41	54	41	94	47	31	44,5	160
L	35	D331-35L-42M	M42x2	48	50	50	62	49	118	59	38	53	160
L	42	D331-42L-48M	M48x2	48	60	55	65	52	122	61	38	58	160
S	6	D331-06S-12M	M12x1,5	14	17	17	33	22,5	61	30,5	15,5	18	315
S	8	D331-08S-14M	M14x1,5	19	19	19	36	26	66	33	18	19	315
S	10	D331-10S-16M	M16x1,5	19	22	22	38	28,5	68	34	18	22,9	315
S	12	D331-12S-18M	M18x1,5	22	24	24	43	29,5	76	38	22	26,3	315
S	16	D331-16S-22M	M22x1,5	27	30	27	50	36	86	43	25	28,3	250
S	20	D331-20S-27M	M27x2	30	36	32	53,5	38	98	49	28	34,5	250
S	25	D331-25S-33M	M33x2	25	46	41	57	41	109	54,5	30,5	44,5	160
S	30	D331-30S-42M	M42x2	48	50	50	68	49	124	63	36	53	160
S	38	D331-38S-48M	M48x2	48	60	55	69	52	130	65	34	58	160

D332

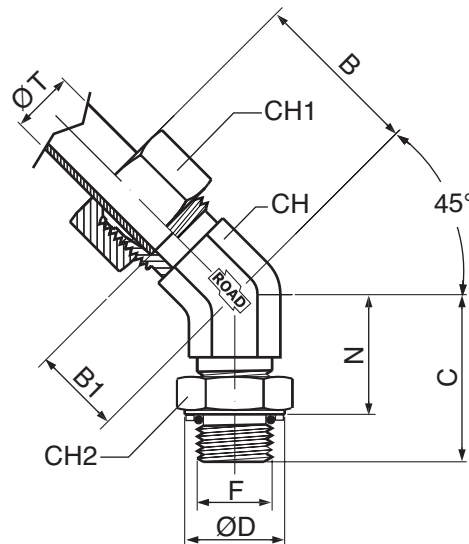
**RACCORDO A T ORIENTABILE
LATERALE CON FILETTATURA
METRICO CILINDRICA DIN 3852-1**
**RUN TEE ADJUSTABLE UNION
WITH METRIC CYLINDRICAL
THREAD DIN 3852-1**



SERIE	T	CODE	F	CH	CH1	CH2	C	N	A	B	B1	D	Pressure
	Ø			mm	mm	mm	mm	mm ±1	mm	mm	mm	Ø	Wp
L	6	D332-06L-10M	M10x1	14	14	14	27,5	22	56,5	29	14	16	315
L	8	D332-08L-12M	M12x1,5	14	17	17	32	22,5	63	31	16	18	315
L	10	D332-10L-14M	M14x1,5	19	19	19	35	26	67	32	17	19	315
L	12	D332-12L-16M	M16x1,5	19	22	22	36	28,5	70	34	19	22,9	315
L	15	D332-15L-18M	M18x1,5	22	27	24	41	31	77	36	21	26,3	315
L	18	D332-18L-22M	M22x1,5	27	32	27	45	36	85	40	24	28,3	250
L	22	D332-22L-27M	M27x2	33	36	32	49,5	38	93,5	44	28	34,5	160
L	28	D332-28L-33M	M33x2	41	41	41	54	41	101	47	31	44,5	160
L	35	D332-35L-42M	M42x2	48	50	50	62	49	121	59	38	53	160
L	42	D332-42L-48M	M48x2	48	60	55	65	52	126	61	38	58	160
S	6	D332-06S-12M	M12x1,5	14	17	17	33	22,5	63,5	30,5	15,5	18	315
S	8	D332-08S-14M	M14x1,5	19	19	19	36	26	69	33	18	19	315
S	10	D332-10S-16M	M16x1,5	19	22	22	38	28,5	72	34	18	22,9	315
S	12	D332-12S-18M	M18x1,5	22	24	24	43	29,5	81	38	22	26,3	315
S	16	D332-16S-22M	M22x1,5	27	30	27	50	36	93	43	25	28,3	250
S	20	D332-20S-27M	M27x2	33	36	32	53,5	38	102,5	49	28	34,5	250
S	25	D332-25S-33M	M33x2	41	46	41	57	41	111,5	54,5	30,5	44,5	160
S	30	D332-30S-42M	M42x2	48	50	50	68	49	130	63	36	53	160
S	38	D332-38S-48M	M48x2	48	60	55	69	52	134	65	34	58	160

D333

**RACCORDO A 45° ORIENTABILE
CON FILETTATURA METRICO
CILINDRICA DIN 3852-1**
**45° ADJUSTABLE UNION WITH
METRIC CYLINDRICAL THREAD
DIN 3852-1**

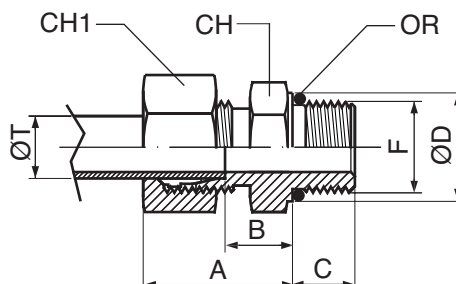


SERIE	T	CODE	F	CH	CH1	CH2	C	N	B	B1	D	Pressure
	Ø			mm	mm	mm	mm	mm ±1	mm	mm	Ø	Wp
L	6	D333-06L-10M	M10x1	14	14	14	27,5	22	29	14	16	315
L	8	D333-08L-12M	M12x1,5	14	17	17	32	22,5	31	16	18	315
L	10	D333-10L-14M	M14x1,5	19	19	19	35	26	32	17	19	315
L	12	D333-12L-16M	M16x1,5	19	22	22	36	28,5	34	19	22,9	315
L	15	D333-15L-18M	M18x1,5	22	27	24	41	31	36	21	26,3	315
L	18	D333-18L-22M	M22x1,5	27	32	27	45	36	40	24	28,3	250
L	22	D333-22L-27M	M27x2	33	36	32	49,5	38	44	28	34,5	160
L	28	D333-28L-33M	M33x2	41	41	41	54	41	47	31	44,5	160
L	35	D333-35L-42M	M42x2	48	50	50	62	49	59	38	53	160
L	42	D333-42L-48M	M48x2	48	60	55	65	52	61	38	58	160
S	6	D333-06S-12M	M12x1,5	14	17	17	33	22,5	30,5	15,5	18	315
S	8	D333-08S-14M	M14x1,5	19	19	19	36	26	33	18	19	315
S	10	D333-10S-16M	M16x1,5	19	22	22	38	28,5	34	18	22,9	315
S	12	D333-12S-18M	M18x1,5	22	24	24	43	29,5	38	22	26,3	315
S	16	D333-16S-22M	M22x1,5	27	30	27	50	36	43	25	28,3	250
S	20	D333-20S-27M	M27x2	33	36	32	53,5	38	49	28	34,5	250
S	25	D333-25S-33M	M33x2	41	46	41	57	41	54,5	30,5	44,5	160
S	30	D333-30S-42M	M42x2	48	50	50	68	49	63	36	53	160
S	38	D333-38S-48M	M48x2	48	60	55	69	52	65	34	58	160

D379

**RACCORDO DIRITTO CON
FILETTATURA TERMINALE
MASCHIO METRICO CILINDRICO
ISO 6149-2**

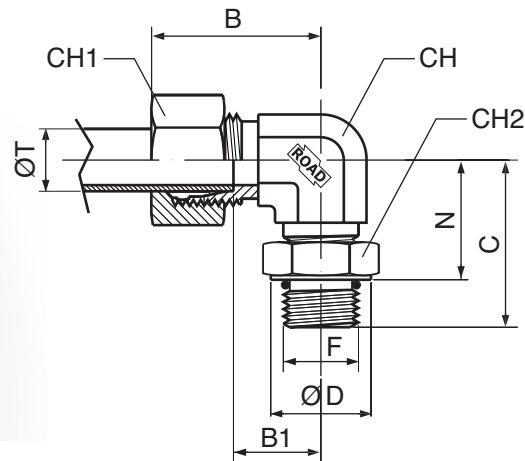
**STRAIGHT END UNION WITH
METRIC CYLINDRICAL THREAD
ISO 6149-2**



SERIE	T	CODE	F	CH	CH1	C	A	D	B	Pressure
	Ø			mm	mm	mm	mm	Ø	mm	Wp
L	6	D379-06L-10M	M10x1	14	14	8	23	14	9,5	315
L	8	D379-08L-12M	M12x1,5	17	17	12	25	17	10	315
L	10	D379-10L-14M	M14x1,5	19	19	12	26	19	11	315
L	10	D379-10L-16M	M16x1,5	22	19	12	27,5	21,7	12,5	315
L	10	D379-10L-18M	M18x1,5	24	19	12	27,5	23,7	12,5	315
L	12	D379-12L-16M	M16x1,5	22	22	12	27	21,7	12,5	315
L	12	D379-12L-18M	M18x1,5	24	22	12	33	23,7	14,5	315
L	12	D379-12L-22M	M22x1,5	27	22	14	28,5	27	16,5	315
L	15	D379-15L-18M	M18x1,5	24	27	12	29	23,7	13,5	315
L	15	D379-15L-22M	M22x1,5	27	27	14	31	27	14,5	315
L	18	D379-18L-22M	M22x1,5	27	32	14	31	27	14,5	315
L	22	D379-22L-26M	M26x1,5	32	36	16	33	31,7	16,5	160
L	28	D379-28L-33M	M33x2	41	41	18	34	39,7	17,5	160
L	35	D379-35L-42M	M42x2	50	50	20	39	49,7	17,5	160
L	42	D379-42L-48M	M48x2	55	60	22	42	55	19	160
S	6	D379-06S-12M	M12x1,5	17	17	12	28	17	13	630
S	8	D379-08S-14M	M14x1,5	19	19	12	30	19	15	630
S	10	D379-10S-16M	M16x1,5	22	22	12	31	21,7	15	630
S	12	D379-12S-18M	M18x1,5	24	24	12	33	23,7	17	630
S	14	D379-14S-20M	M20x1,5	27	27	14	37	25,7	19	630
S	16	D379-16S-22M	M22x1,5	27	30	14	37	27	18,5	400
S	20	D379-20S-27M	M27x2	32	36	16	42	32	20,5	400
S	25	D379-25S-33M	M33x2	41	46	18	47	39,7	23	400
S	30	D379-30S-42M	M42x2	50	50	20	50	49,7	23,5	400
S	38	D379-38S-48M	M48x2	55	60	22	57	55	26	315

D380

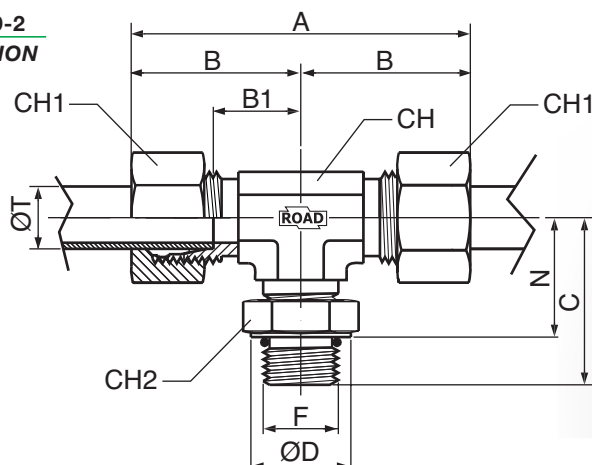
**RACCORDO A 90° ORIENTABILE
CON FILETTATURA METRICA
CILINDRICA ISO 6149-2
90° ADJUSTABLE UNION WITH
METRIC CYLINDRICAL THREAD
ISO 6149-2**



SERIE	T	CODE	F	CH	CH1	CH2	C	N	B	B1	D	Pressure
	Ø			mm	mm	mm	mm	mm ±1	mm	mm	Ø	Wp
L	6	D380-06L-10M	M10x1	14	14	14	27,5	22	29	14	16	315
L	8	D380-08L-12M	M12x1,5	14	17	17	32	22,5	31	16	18	315
L	10	D380-10L-14M	M14x1,5	19	19	19	35	26	32	17	19	315
L	12	D380-12L-16M	M16x1,5	19	22	22	36	28,5	34	19	22,9	315
L	15	D380-15L-18M	M18x1,5	22	27	24	41	31	36	21	26,3	315
L	18	D380-18L-22M	M22x1,5	27	32	27	45	36	40	24	28,3	250
L	22	D380-22L-27M	M27x2	33	36	32	49,5	38	44	28	34,5	160
L	28	D380-28L-33M	M33x2	41	41	41	54	41	47	31	44,5	160
L	35	D380-35L-42M	M42x2	48	50	50	62	49	59	38	53	160
L	42	D380-42L-48M	M48x2	48	60	55	65	52	61	38	58	160
S	6	D380-06S-12M	M12x1,5	14	17	17	33	22,5	30,5	15,5	18	315
S	8	D380-08S-14M	M14x1,5	19	19	19	36	26	33	18	19	315
S	10	D380-10S-16M	M16x1,5	19	22	22	38	28,5	34	18	22,9	315
S	12	D380-12S-18M	M18x1,5	22	24	24	43	29,5	38	22	26,3	315
S	16	D380-16S-22M	M22x1,5	27	30	27	50	36	43	25	28,3	250
S	20	D380-20S-27M	M27x2	33	36	32	53,5	38	49	28	34,5	250
S	25	D380-25S-33M	M33x2	41	46	41	57	41	54,5	30,5	44,5	160
S	30	D380-30S-42M	M42x2	48	50	50	68	49	63	36	53	160
S	38	D380-38S-48M	M48x2	48	60	55	69	52	65	34	58	160

D381

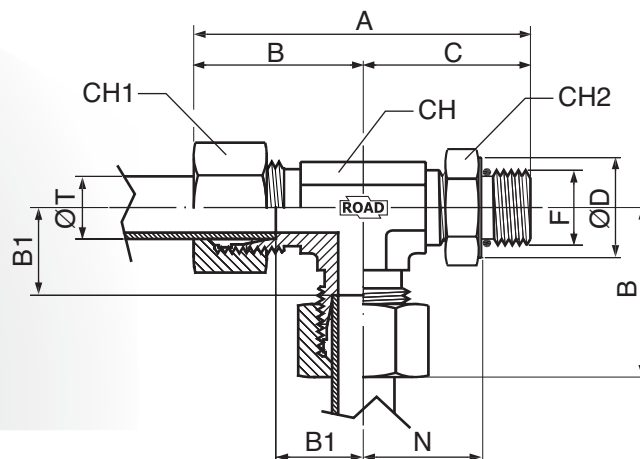
**RACCORDO A T ORIENTABILE
CENTRALE CON FILETTATURA
METRICO CILINDRICA ISO 6149-2
BRANCH TEE ADJUSTABLE UNION
WITH METRIC CYLINDRICAL
THREAD ISO 6149-2**



SERIE	T	CODE	F	CH	CH1	CH2	C	N	A	B	B1	D	Pressure
	Ø			mm	mm	mm	mm	mm ±1	mm	mm	mm	Ø	Wp
L	6	D381-06L-10M	M10x1	14	14	14	27,5	22	58	29	14	16	315
L	8	D381-08L-12M	M12x1,5	14	17	17	32	22,5	62	31	16	18	315
L	10	D381-10L-14M	M14x1,5	19	19	19	35	26	64	32	17	19	315
L	12	D381-12L-16M	M16x1,5	19	22	22	36	28,5	68	34	19	22,9	315
L	15	D381-15L-18M	M18x1,5	22	27	24	41	31	72	36	21	26,3	315
L	18	D381-18L-22M	M22x1,5	27	32	27	45	36	80	40	24	28,3	250
L	22	D381-22L-27M	M27x2	33	36	32	49,5	38	88	44	28	34,5	160
L	28	D381-28L-33M	M33x2	41	41	41	54	41	94	47	31	44,5	160
L	35	D381-35L-42M	M42x2	48	50	50	62	49	118	59	38	53	160
L	42	D381-42L-48M	M48x2	48	60	55	65	52	122	61	38	58	160
S	6	D381-06S-12M	M12x1,5	14	17	17	33	22,5	61	30,5	15,5	18	315
S	8	D381-08S-14M	M14x1,5	19	19	19	36	26	66	33	18	19	315
S	10	D381-10S-16M	M16x1,5	19	22	22	38	28,5	68	34	18	22,9	315
S	12	D381-12S-18M	M18x1,5	22	24	24	43	29,5	76	38	22	26,3	315
S	16	D381-16S-22M	M22x1,5	27	30	27	50	36	86	43	25	28,3	250
S	20	D381-20S-27M	M27x2	33	36	32	53,5	38	98	49	28	34,5	250
S	25	D381-25S-33M	M33x2	41	46	41	57	41	109	54,5	30,5	44,5	160
S	30	D381-30S-42M	M42x2	48	50	50	68	49	124	63	36	53	160
S	38	D381-38S-48M	M48x2	48	60	55	69	52	130	65	34	58	160

D382

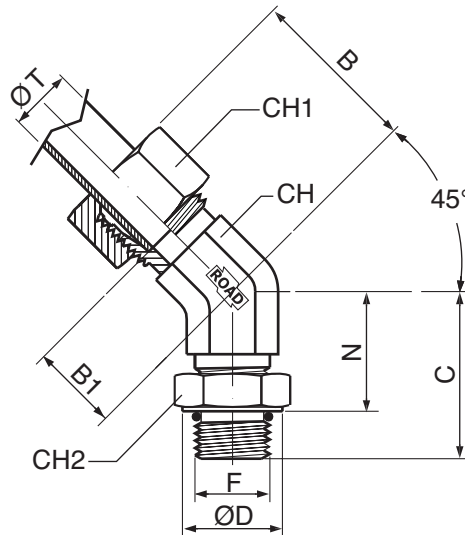
**RACCORDO A T ORIENTABILE
LATERALE CON FILETTATURA
METRICO CILINDRICA ISO 6149-2
RUN TEE ADJUSTABLE UNION
WITH METRIC CYLINDRICAL
THREAD ISO 6149-2**



SERIE	T	CODE	F	CH	CH1	CH2	C	N	A	B	B1	D	Pressure
	Ø			mm	mm	mm	mm	mm ±1	mm	mm	mm	Ø	Wp
L	6	D382-06L-10M	M10x1	14	14	14	27,5	22	56,5	29	14	16	315
L	8	D382-08L-12M	M12x1,5	14	17	17	32	22,5	63	31	16	18	315
L	10	D382-10L-14M	M14x1,5	19	19	19	35	26	67	32	17	19	315
L	12	D382-12L-16M	M16x1,5	19	22	22	36	28,5	70	34	19	22,9	315
L	15	D382-15L-18M	M18x1,5	22	27	24	41	31	77	36	21	26,3	315
L	18	D382-18L-22M	M22x1,5	27	32	27	45	36	85	40	24	28,3	250
L	22	D382-22L-27M	M27x2	33	36	32	49,5	38	93,5	44	28	34,5	160
L	28	D382-28L-33M	M33x2	41	41	41	54	41	101	47	31	44,5	160
L	35	D382-35L-42M	M42x2	48	50	50	62	49	121	59	38	53	160
L	42	D382-42L-48M	M48x2	48	60	55	65	52	126	61	38	58	160
S	6	D382-06S-12M	M12x1,5	14	17	17	33	22,5	63,5	30,5	15,5	18	315
S	8	D382-08S-14M	M14x1,5	19	19	19	36	26	69	33	18	19	315
S	10	D382-10S-16M	M16x1,5	19	22	22	38	28,5	72	34	18	22,9	315
S	12	D382-12S-18M	M18x1,5	22	24	24	43	29,5	81	38	22	26,3	315
S	16	D382-16S-22M	M22x1,5	27	30	27	50	36	93	43	25	28,3	250
S	20	D382-20S-27M	M27x2	33	36	32	53,5	38	102,5	49	28	34,5	250
S	25	D382-25S-33M	M33x2	41	46	41	57	41	111,5	54,5	30,5	44,5	160
S	30	D382-30S-42M	M42x2	48	50	50	68	49	130	63	36	53	160
S	38	D382-38S-48M	M48x2	48	60	55	69	52	134	65	34	58	160

D383

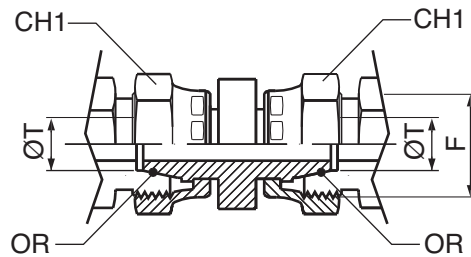
**RACCORDO A 45° ORIENTABILE
CON FILETTATURA METRICO
CILINDRICA ISO 6149-2
45° ADJUSTABLE UNION WITH
METRIC CYLINDRICAL THREAD
ISO 6149-2**



SERIE	T	CODE	F	CH	CH1	CH2	C	N	B	B1	D	Pressure
	Ø			mm	mm	mm	mm	mm ±1	mm	mm	Ø	Wp
L	6	D383-06L-10M	M10x1	14	14	14	27,5	22	29	14	16	315
L	8	D383-08L-12M	M12x1,5	14	17	17	32	22,5	31	16	18	315
L	10	D383-10L-14M	M14x1,5	19	19	19	35	26	32	17	19	315
L	12	D383-12L-16M	M16x1,5	19	22	22	36	28,5	34	19	22,9	315
L	15	D383-15L-18M	M18x1,5	22	27	24	41	31	36	21	26,3	315
L	18	D383-18L-22M	M22x1,5	27	32	27	45	36	40	24	28,3	250
L	22	D383-22L-27M	M27x2	33	36	32	49,5	38	44	28	34,5	160
L	28	D383-28L-33M	M33x2	41	41	41	54	41	47	31	44,5	160
L	35	D383-35L-42M	M42x2	48	50	50	62	49	59	38	53	160
L	42	D383-42L-48M	M48x2	48	60	55	65	52	61	38	58	160
S	6	D383-06S-12M	M12x1,5	14	17	17	33	22,5	30,5	15,5	18	315
S	8	D383-08S-14M	M14x1,5	19	19	19	36	26	33	18	19	315
S	10	D383-10S-16M	M16x1,5	19	22	22	38	28,5	34	18	22,9	315
S	12	D383-12S-18M	M18x1,5	22	24	24	43	29,5	38	22	26,3	315
S	16	D383-16S-22M	M22x1,5	27	30	27	50	36	43	25	28,3	250
S	20	D383-20S-27M	M27x2	33	36	32	53,5	38	49	28	34,5	250
S	25	D383-25S-33M	M33x2	41	46	41	57	41	54,5	30,5	44,5	160
S	30	D383-30S-42M	M42x2	48	50	50	68	49	63	36	53	160
S	38	D383-38S-48M	M48x2	48	60	55	69	52	65	34	58	160

D334

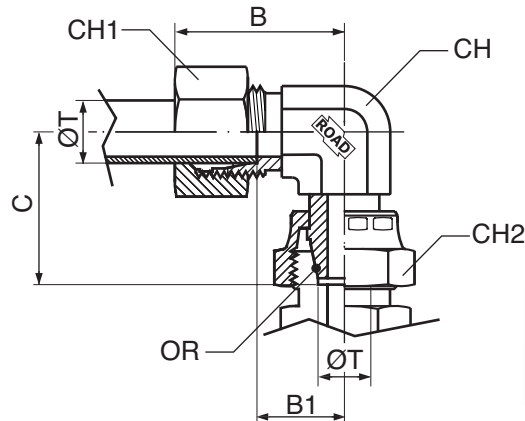
**RACCORDO INTERMEDIO DIRITTO
CON DADO GIREVOLE**
**INTERMEDIATE STRAIGHT END
UNION WITH SWIVEL NUT**



SERIE	T Ø	CODE	F	CH1 mm	A mm	Pressure Wp
L	6	D334-06L	M12x1,5	14	35	315
L	8	D334-08L	M14x1,5	17	35	315
L	10	D334-10L	M16x1,5	19	33,4	315
L	12	D334-12L	M18x1,5	22	37	315
L	15	D334-15L	M22x1,5	27	37	315
L	18	D334-18L	M26x1,5	32	39	315
L	22	D334-22L	M30x2	36	41,4	160
L	28	D334-28L	M36x2	41	44,4	160
L	35	D334-35L	M45x2	50	52,8	160
L	42	D334-42L	M52x2	60	53,6	160
S	6	D334-06S	M14x1,5	17	35	630
S	8	D334-08S	M16x1,5	19	34	630
S	10	D334-10S	M18x1,5	22	38,4	630
S	12	D334-12S	M20x1,5	24	37	630
S	14	D334-14S	M22x1,5	27	41	630
S	16	D334-16S	M24x1,5	30	43	400
S	20	D334-20S	M30x2	36	51,5	400
S	25	D334-25S	M36x2	46	57,5	400
S	30	D334-30S	M42x2	50	62,6	400
S	38	D334-38S	M52x2	60	67,8	315

D335

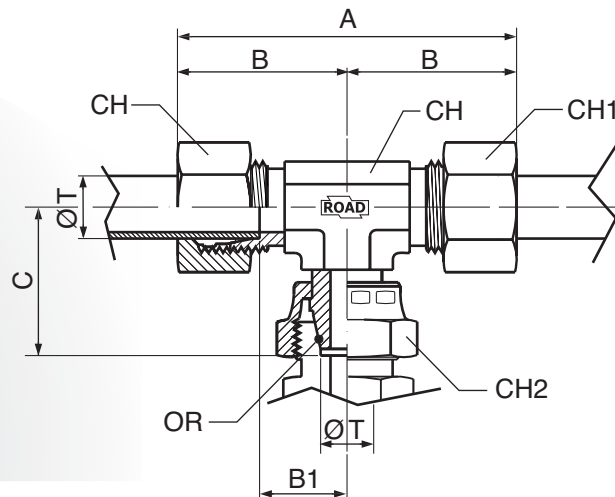
**RACCORDO A 90° INTERMEDIO
CON DADO GIREVOLE**
**INTERMEDIATE 90° UNION WITH
SWIVEL NUT**



SERIE	T	CODE	CH	CH1	CH2	C	B	B1	Pressure
	Ø		mm	mm	mm	mm	mm	mm	Wp
L	6	D335-06-06L	12	14	14	26	27	12	315
L	8	D335-08-08L	12	17	17	27,5	29	14	315
L	10	D335-10-10L	14	19	19	29	30	15	315
L	12	D335-12-12L	17	22	22	29,5	32	17	315
L	15	D335-15-15L	19	27	27	32,5	36	21	315
L	18	D335-18-18L	24	32	32	35,5	40	23,5	315
L	22	D335-22-22L	27	36	36	38,5	44	27,5	160
L	28	D335-28-28L	36	41	41	41,5	47	30,5	160
L	35	D335-35-35L	41	50	50	51	56	34,5	160
L	42	D335-42-42L	50	60	60	56	63	40	160
S	6	D335-06-06S	12	17	17	27	31	16	630
S	8	D335-08-08S	14	19	19	27,5	32	17	630
S	10	D335-10-10S	17	22	22	30	34	17,5	630
S	12	D335-12-12S	17	24	24	31	38	21,5	630
S	14	D335-14-14S	19	27	27	35	40	22	630
S	16	D335-16-16S	24	30	30	36,5	43	24,5	400
S	20	D335-20-20S	27	36	36	44,5	48	26,5	400
S	25	D335-25-25S	36	46	46	50	54	30	400
S	30	D335-30-30S	41	50	50	55	62	35,5	400
S	38	D335-38-38S	50	60	60	63	72	41	315

D336

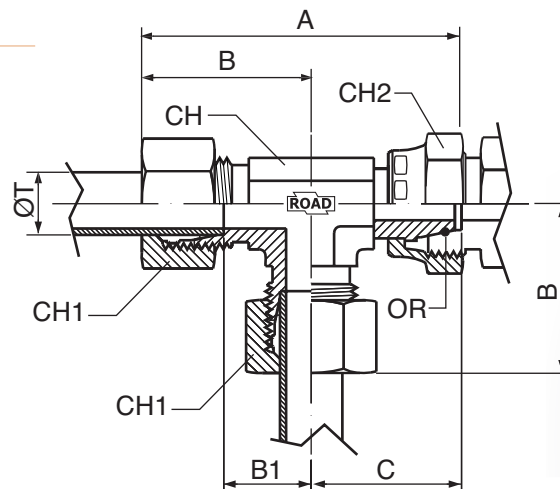
**RACCORDO A T CON DADO
GIREVOLE CENTRALE
BRANCH TEE UNION WITH SWIVEL
NUT**



SERIE	T	CODE	CH	CH1	CH2	C	A	B	B1	Pressure
	Ø		mm	mm	mm	mm	mm	mm	mm	Wp
L	6	D336-06-06L	12	14	14	26	53	27	12	315
L	8	D336-08-08L	12	17	17	27,5	56,5	29	14	315
L	10	D336-10-10L	14	19	19	29	59	30	15	315
L	12	D336-12-12L	17	22	22	29,5	61,5	32	17	315
L	15	D336-15-15L	19	27	27	32,5	68,5	36	21	315
L	18	D336-18-18L	24	32	32	35,5	75,5	40	23,5	315
L	22	D336-22-22L	27	36	36	38,5	82,5	44	27,5	160
L	28	D336-28-28L	36	41	41	41,5	88,5	47	30,5	160
L	35	D336-35-35L	41	50	50	51	107	56	34,5	160
L	42	D336-42-42L	50	60	60	56	119	63	40	160
S	6	D336-06-06S	12	17	17	27	58	31	16	630
S	8	D336-08-08S	14	19	19	27,5	59,5	32	17	630
S	10	D336-10-10S	17	22	22	30	64	34	17,5	630
S	12	D336-12-12S	17	24	24	31	69	38	21,5	630
S	14	D336-14-14S	19	27	27	35	75	40	22	630
S	16	D336-16-16S	24	30	30	36,5	79,5	43	24,5	400
S	20	D336-20-20S	27	36	36	44,5	92,5	48	26,5	400
S	25	D336-25-25S	36	46	46	50	104	54	30	400
S	30	D336-30-30S	41	50	50	55	117	62	35,5	400
S	38	D336-38-38S	50	60	60	63	135	72	41	315

D337

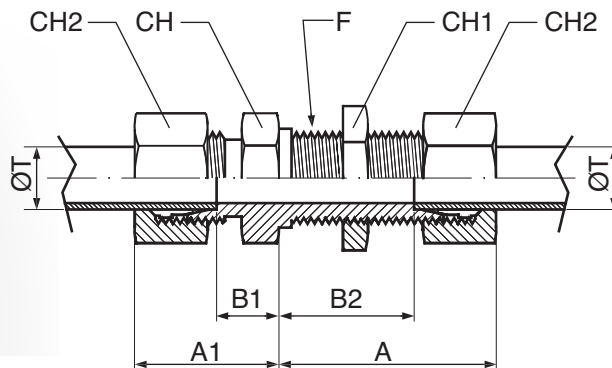
**RACCORDO A T CON DADO
GIREVOLE LATERALE**
**RUN TEE UNION WITH SWIVEL
NUT**



SERIE	T	CODE	CH	CH1	CH2	C	A	B	B1	Pressure
	Ø		mm	mm	mm	mm	mm	mm	mm	Wp
L	6	D337-06-06L	12	14	14	26	54	27	12	315
L	8	D337-08-08L	12	17	17	27,5	58	29	14	315
L	10	D337-10-10L	14	19	19	29	60	30	15	315
L	12	D337-12-12L	17	22	22	29,5	64	32	17	315
L	15	D337-15-15L	19	27	27	32,5	72	36	21	315
L	18	D337-18-18L	24	32	32	35,5	80	40	23,5	315
L	22	D337-22-22L	27	36	36	38,5	88	44	27,5	160
L	28	D337-28-28L	36	41	41	41,5	94	47	30,5	160
L	35	D337-35-35L	41	50	50	51	112	56	34,5	160
L	42	D337-42-42L	50	60	60	56	126	63	40	160
S	6	D337-06-06S	12	17	17	27	62	31	16	630
S	8	D337-08-08S	14	19	19	27,5	64	32	17	630
S	10	D337-10-10S	17	22	22	30	68	34	17,5	630
S	12	D337-12-12S	17	24	24	31	76	38	21,5	630
S	14	D337-14-14S	19	27	27	35	80	40	22	630
S	16	D337-16-16S	24	30	30	36,5	86	43	24,5	400
S	20	D337-20-20S	27	36	36	44,5	96	48	26,5	400
S	25	D337-25-25S	36	46	46	50	108	54	30	400
S	30	D337-30-30S	41	50	50	55	124	62	35,5	400
S	38	D337-38-38S	50	60	60	63	144	72	41	315

D307

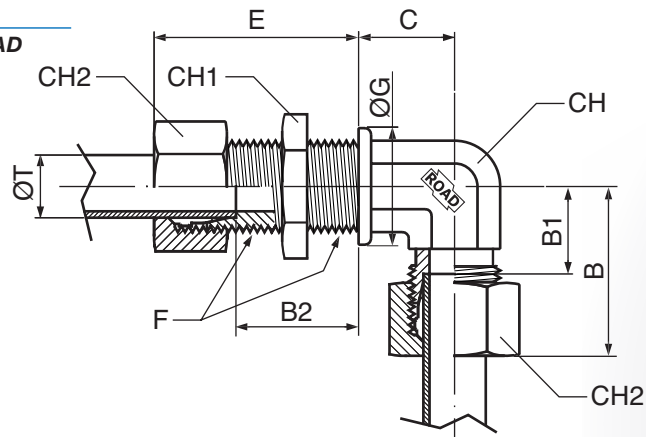
**RACCORDO INTERMEDIO DIRITTO
PASSAPARATIA
INTERMEDIATE BULKHEAD
STRAIGHT END UNION**



SERIE	T	CODE	F	CH	CH1	CH2	A	A1	B1	B2	Pressure
	Ø			mm	mm	mm	mm	mm	mm	mm	Wp
L	06	D360-06L	M12x1,5	17	17	14	42	22	7	27	315
L	08	D307-08L	M14x1,5	19	19	17	42	23	8	27	315
L	10	D307-10L	M16x1,5	22	22	19	43	25	10	28	315
L	12	D307-12L	M18x1,5	24	24	22	44	25	10	29	315
L	15	D307-15L	M22x1,5	27	30	27	46	27	12	31	315
L	18	D307-18L	M26x1,5	32	36	32	49	30	13,5	32,5	315
L	22	D307-22L	M30x2	36	41	36	51	33	16,5	34,5	160
L	28	D307-28L	M36x2	41	46	41	52	35	18,5	35,5	160
L	35	D307-35L	M45x2	50	55	50	58	40	18,5	36,5	160
L	42	D307-42L	M52x2	60	65	60	59	42	19	36	160
S	06	D307-06S	M14x1,5	19	19	17	44	27	12	29	630
S	08	D307-08S	M16x1,5	22	22	19	44	28	13	29	630
S	10	D307-10S	M18x1,5	24	24	22	46	31	14,5	29,5	630
S	12	D307-10S	M20x1,5	27	27	24	47	31	14,5	30,5	630
S	14	D307-14S	M22x1,5	30	30	27	50	35	17	32	630
S	16	D307-16S	M24x1,5	32	32	30	50	35	16,5	31,5	400
S	20	D307-20S	M30x2	41	41	36	55	39	17,5	33,5	400
S	25	D307-25S	M36x2	46	46	46	59	44	20	35	400
S	30	D307-30S	M42x2	50	50	50	64	48	21,5	37,5	400
S	38	D307-38S	M52x2	65	65	60	68	53	22	37	315

D308

**RACCORDO INTERMEDIO A 90°
PASSAPARATIA
INTERMEDIATE 90° BULKHEAD
UNION**

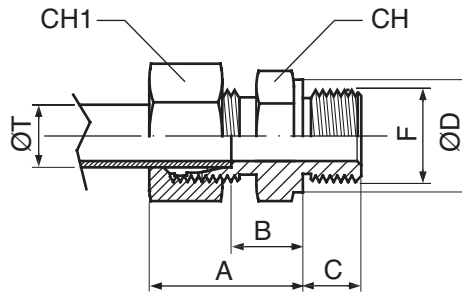


SERIE	T	CODE	F	CH	CH1	CH2	B	B1	B2	C	G	E	Pressure
	Ø			mm	mm	mm	mm	mm	mm	mm	mm	mm	Wp
L	06	D308-06L	M12x1,5	12	17	14	27	12	27	14	17	42	315
L	08	D308-08L	M14x1,5	12	19	17	29	14	27	17	19	42	315
L	10	D308-10L	M16x1,5	14	22	19	30	15	28	18	22	43	315
L	12	D308-12L	M18x1,5	17	24	22	32	17	29	20	24	44	315
L	15	D308-15L	M22x1,5	19	30	27	36	21	31	23	27	46	315
L	18	D308-18L	M26x1,5	24	36	32	40	23,5	32,5	24	32	49	315
L	22	D308-22L	M30x2	27	41	36	44	27,5	34,5	30	36	51	160
L	28	D308-28L	M36x2	36	46	41	47	30,5	35,5	34	42	52	160
L	35	D308-35L	M45x2	41	55	50	56	34,5	36,5	39	50	58	160
L	42	D308-42L	M52x2	50	65	60	63	40	36	43	60	59	160
S	06	D308-06S	M14x1,5	12	19	17	31	16	29	17	19	44	630
S	08	D308-08S	M16x1,5	14	22	19	32	17	29	18	22	44	630
S	10	D308-10S	M18x1,5	17	24	22	34	17,5	29,5	20	24	46	630
S	12	D308-12S	M20x1,5	17	27	24	38	21,5	30,5	21	27	47	630
S	14	D308-14S	M22x1,5	19	30	27	40	22	32	23	27	50	630
S	16	D308-16S	M24x1,5	24	32	30	43	24,5	31,5	24	30	50	400
S	20	D308-20S	M30x2	27	41	36	48	26,5	33,5	30	36	55	400
S	25	D308-25S	M36x2	36	46	46	54	30	35	34	42	59	400
S	30	D308-30S	M42x2	41	50	50	62	35,5	37,5	39	50	64	400
S	38	D308-38S	M52x2	50	65	60	72	41	37	43	60	68	315

D343

**RACCORDO DIN CON
FILETTATURA TERMINALE BSPP
A TENUTA METALLO SU METALLO-
FORMA B**

**STRAIGHT END UNIONS MALE
THREAD BSPP METAL TO METAL
SHAPE B**



SERIE	T	CODE	F	CH	CH1	C	A	B	D	Pressure
	Ø			mm	mm	mm	mm	mm	Ø	Wp
L	6	D344-06L-10G	1/8-28	14	14	8	23	8,5	14	315
L	6	D344-06L-13G	1/4-19	19	14	12	25	10	18,7	315
L	8	D344-08L-13G	1/4-19	19	17	12	25	10	18,7	315
L	8	D344-08L-10G	1/8-28	14	17	8	24,5	9,5	14	315
L	8	D344-08L-17G	3/8-19	22	17	12	26,5	11,5	22	315
L	10	D344-10L-13G	1/4-19	19	19	12	26	11	18,7	315
L	10	D344-10L-17G	3/8-19	22	19	12	27,5	12,5	22	315
L	10	D344-10L-21G	1/2-14	27	19	14	28	13	26,7	315
L	12	D344-12L-17G	3/8-19	22	22	12	27,5	12,5	22	315
L	12	D344-12L-13G	1/4-19	22	22	12	27,5	12,5	18,7	315
L	12	D344-12L-21G	1/2-14	27	22	14	27,5	13	26,7	315
L	15	D344-15L-21G	1/2-14	27	27	14	29	14	26,7	315
L	15	D344-15L-17G	3/8-19	27	27	12	28,5	13,5	22	315
L	18	D344-18L-21G	1/2-14	27	32	14	31	14,5	26,7	315
L	18	D344-18L-26G	3/4-14	32	32	16	31	14,5	32	315
L	22	D344-22L-26G	3/4-14	32	36	16	33	16,5	32	160
L	28	D344-28L-33G	1-11	41	41	18	34	17,5	39,7	160
L	35	D344-35L-42G	1 1/4-11	50	50	20	39	17,5	49,7	160
L	42	D344-42L-48G	1 1/2-11	55	60	22	42	19	55	160
S	6	D344-06S-13G	1/4-19	19	17	12	28	13	18,7	630
S	8	D344-08S-13G	1/4-19	19	19	12	30	15	18,7	630
S	8	D344-08S-17G	3/8-19	22	19	12	30,5	15,5	22	630
S	10	D344-10S-17G	3/8-19	22	22	12	31	15	22	630
S	10	D344-10S-13G	1/4-19	22	22	12	30,5	14,5	18,7	630
S	10	D344-10S-21G	1/2-14	27	22	14	33,5	17,5	26,7	630
S	12	D344-12S-17G	3/8-19	22	24	12	33	17	22	630
S	12	D344-12S-13G	1/4-19	22	24	12	32,5	16,5	19	630
S	12	D344-12S-21G	1/2-14	27	24	14	33,5	17,5	27	630
S	14	D344-14S-21G	1/2-14	27	27	14	37	19	26,7	630
S	16	D344-16S-21G	1/2-14	27	30	14	37	18,5	26,7	400
S	16	D344-16S-17G	3/8-19	27	30	12	36,5	18	22	400
S	16	D344-16S-26G	3/4-14	32	30	16	39	20,5	32	400
S	20	D344-20S-26G	3/4-14	32	36	16	42	20,5	32	400
S	25	D344-25S-33G	1-11	41	46	18	47	23	39,7	400
S	25	D344-25S-26G	3/4-14	41	46	16	47	23	32	400
S	30	D344-30S-42G	1 1/4-11	50	50	20	50	23,5	49,7	400
S	38	D344-38S-48G	1 1/2-11	55	60	22	57	26	55	315